

HEDG Working Paper 10/16

**Death by lung cancer or by diabetes?
The unintended consequences of
quitting smoking**

**Federico A. Todeschini
José María Labeaga
Sergi Jiménez-Martín**

July 2010

Death by lung cancer or by diabetes? The unintended consequences of quitting smoking*

Federico A. Todeschini
FUNIF

José María Labeaga
IEF and UNED

Sergi Jiménez-Martín
UPF and FEDEA[†]

This draft: July 2010

Abstract

In this paper we study one potential unintended consequences that the US anti-smoking campaign might have had: an increase in the average weight of the population. To these ends, we use data from the Behavioral Risk Factors Surveillance System, a large series of independent representative cross-sectional surveys. We construct a synthetic panel that allows us to control for unobserved heterogeneity and we exploit the exogenous changes in taxes and regulations to instrument the endogenous decision to give up the habit of smoking. Our estimates, are very close to estimates issued in the '90s by the US Department of Health, and indicate that a 10% decrease in the incidence of smoking leads to an average weight increase of 2.2 to 3 pounds, depending on choice of specification. In addition, we find evidence that the effect overshoots in the short run, although a significant part remains even after two years. However, when we split the sample between men and women, we only find a significant effect for men. Finally, the implicit elasticity of quitting smoking to the probability of becoming obese is calculated at 0.58. This implies that the cost to society from reducing the incidence of smoking is \$0.6 billions larger than previously estimated, although the benefit is still positive.

*We thank the support from project SEJ2005-08783-C04-01-04 and the FEDEA-LaCaixa chair on Health Economics. We would like to thank the participants of the FEDEA seminar, UPF Applied Microeconomics Seminar, Inter-American Development Bank, the UPF Health Economics Seminar, Simposio de Análisis Económico España and Vrije Universiteit Amsterdam for helpful comments. Special thanks to Eduardo Cavallo, Juan Manuel Puerta, Bus van der Klaauw, Shikeb Farooqui, Climent Quintana, Robert Kaestner and Antonio Cabrales for their comments. The usual caveats applies. Corresponding author: todeschini.federico@upf.edu

[†]Department of Economics, Ramon Trias Fargas 25. 08005 BARCELONA (SPAIN). sergi.jimenez@upf.edu

1 Introduction

In the last 40 years the percentage of US adults who smoke regularly dropped from above 42% in 1965 to below 20% in 2007, according to the Center for Disease Control and Prevention. This drop has been regarded as one of the most important "health victories", Gruber and Frakes (2006). The logic behind these words is that even today cigarette smoking is calculated to kill 438,000 people per year. On top of that, smokers are up to 40% more expensive for the health care system than non-smokers. In between 2000-2004 cigarette smoking was estimated to be responsible for \$193 billions in annual health-related losses (Armour et al. (2005), Barendregt et al. (1997), Miller and Rise (1998) and Adhikari et al. (2008)). These are only some of the direct effects of smoking. Indirect effects range from lower labor productivity to 49,000 deaths per year due to secondhand smoking. The social cost of smoking, calculated in \$11 per pack, almost doubles its private cost (CDC (2006)).

As the battle against smoking started to show very positive outcomes, health practitioners began to notice a new problem: the negative correlation between smoking rates and the prevalence of obesity. As we can see in table 1, in 1985 the average American man was 1.78 mt. tall and weighed 80 Kg. Twenty two years later he weighs almost 10 Kg. more, representing an increase of 12%, even though he is as tall as before. The picture is even worse for women. During the same period they faced a similar average absolute weight gain and consequently a larger relative growth rate¹. This trend is in contrast with historical evidence from the past 150 years where weight increases were not as abrupt and pronounced and were accompanied by increases in height, (Costa and Steckel (1997)).

Table 1: United States Average Weight and Height: 1985 versus 2007

	Men		Women	
	1985	2007	1985	2007
Height (in mt.)	1.78 (0.076)	1.78 (0.075)	1.63 (0.067)	1.63 (0.070)
Weight (in Kg.)	80.06 (13.09)	89.52 (18.11)	63.30 (12.35)	73.31 (17.69)
BMI*	25.25	28.25	23.82	27.58

Source: Behavioral Risk Surveillance System. Standard Deviation between parenthesis.
*Body Mass Index equals weight in kilograms divided by height in squared meters

The increase of the intensive margin went hand in hand with an increase of the extensive margin. Indeed, during the past two decades obesity rates have jumped dramatically among the US population, becoming one of the biggest health concern for policy makers. Before 1980 only 14% of its population was obese, yet nowadays 38% of the men and 34% of the women classify as obese (that is approximately 65 million people). In fact, nowadays American are more likely to be overweight than to pay federal income tax². But not only the number of obese have increased. An increasing proportion of the obese population now belongs to the classes of obesity deemed more troublesome³.

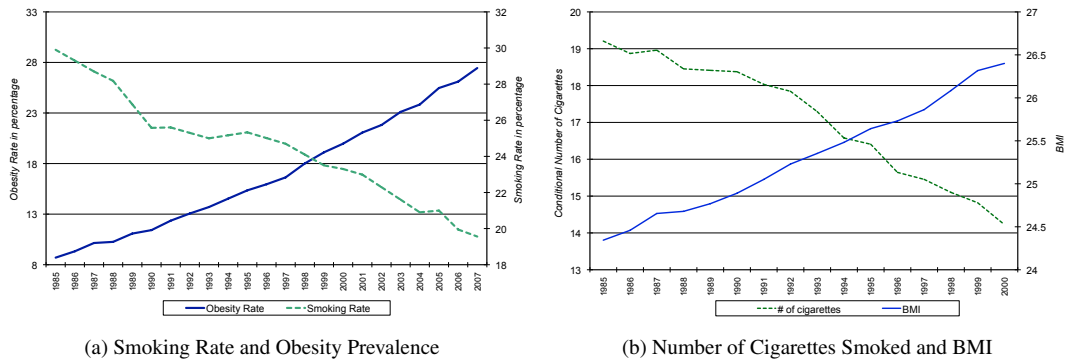
The negative correlation between the conditional number of cigarettes smoked and average body mass index (figure 1a and figure 1b) is a temptation to conclude that net calorie intake has substituted smoking as a habit and consequently that the the increase in weight is an unintended consequence of the decrease in the incidence of smoking. In addition, because smoking affected a large share of the adult population, it is a natural suspect to analyze. The growing concern about obesity on the one hand and the impulse the anti-smoking campaign is having all over the world on the other, make it critical to examine whether the two processes are causally connected. If over eating is a substitute for smoking, some costs related to the anti-smoking campaign might not have been fully internalized by the policy makers. On

¹ According to the NHS data, in the UK for the period that goes from 1993 to 2007 men increased their height by 1 cm and their weight by 4.6 Kg. while women stayed the same height and gained 3kg.

²The Economist, Jan 21 2010.

³Childhood obesity has also been rising. Its prevalence has nearly tripled. Almost 19% of children aged 6 to 11 years and 17.4% of adolescents aged 12 to 19 are now obese, according to the National Center for Health Statistics. America is not only getting fatter, it is doing it at a younger age.

Figure 1: Correlation between Smoking and Weight - USA 1985-2007



Source: National Health Interview Survey and Behavioral Risk Factor Surveillance System. 1985 to 2007

the contrary, if the effect happens to be negative, then there would be benefits that were probably not taken into consideration. This would put additional pressure over the states that have not passed a tough legislation on smoking. Unfortunately, economic theory remains vague in providing testable predictions about how individuals react to the elimination of a habit and this problem is further compounded by the fact that there is hardly any conclusive empirical evidence on this issue.

In addition, there are many economic and biological reasons why quitting smoking and increasing weight might be correlated in an idiosyncratic and non-causal way. First, common omitted factors such as, risk aversion, preferences or variation across individuals in the Basal Metabolic rate provides one motivation for suspecting the presence of individual-specific effects. For instance, if people that quit the habit of smoking are potentially more concerned about health (McCaul et al. (2006) and Clark and Etile (2006)) then they should be less prone to weight gains than continuers. In contrast, if it is true that quitting smoking leads to weight increase, then quitters are less concerned by the risks derived from the increase. In such a scenario, lack of a priori knowledge about the individual specific directional bias can easily generate non-causal correlations. Second, reverse causality poses a similar problem to the analysis. Overweight individuals may use smoking as a weight control method. As a consequence even after controlling for unobserved heterogeneity the error term will still be correlated to the decision of quitting smoking. Similarly, both processes, that is smoking and weight changes, might just be the consequence of a third common factor, for instance the stress due to a harsher labor market. Finally, weight adjustment does not happen instantaneously. On the contrary, weight adjustment costs create an autoregressive process where present weight depends on past weight realizations. Thus, failing to incorporate lagged BMI in the estimation might cause a bias in the estimation.

Summing up, the observed correlation among the two process could be completely spurious. In order to measure the causal effect of quitting smoking on weight then, it is necessary to control for unobservables and the sources of exogenous changes in the individuals decision for quitting smoking.

The economic literature that analyzes the effect of smoking on BMI is relatively recent and so far the results remain inconclusive. Chou et al. (2004), Baum (2009) and Rashad (2006) find that individuals that stop smoking increase their weight. In contrast, Gruber and Frakes (2006) and Courtemanche (2009) arrive to the opposite conclusion. All of these studies concentrate on the effect of increases in the price of cigarettes, whether it be the final price or the excise tax on tobacco. Instead of concentrating on the reduced form regression, we use the exogenous changes in cigarette prices to focus on the impact of quitting smoking on weight. Our decision to to evaluate the final product of the anti-smoking campaign, that is, the decision to quit smoking instead of focusing on just one dimension, for instance

the pecuniary cost of smoking, is substantiated by the following observation. The anti-smoking campaign has many highly correlated dimensions, from information on the consequences of smoking and limitations on the advertisement of cigarettes in TV to smoking prohibitions in public places⁴.

We contribute further to the literature as well as to the debate by applying cohort data techniques to the cross sectional data in order to construct a synthetic panel. This allows us to control for unobservables, and at the same time take into account the dynamic nature of the problem by incorporating the lags of BMI. We instrument the decision to give up smoking using lags of the excise taxes on tobacco, regulations regarding tobacco use in closed spaces and family characteristics. We find these instruments compelling since, conditional on a set of controls, it is difficult to argue that policy makers decided tobacco taxes and regulated its use with the purpose of controlling voters' weight and consequently conditional on certain characteristics of the population we have to control for, they are exogenous. Finally, in order to analyze how quitting smoking affects the probability of becoming obese, we propose and estimate a logistic model for obesity prevalence. The logistic model applied to cell data can be log-linearized, so standard panel and IV methods can be directly applied to the data without losing the properties of the logistic formulation.

According to our results a 10% decrease in the incidence of smoking leads to an average weight increase of 2.2 pounds to 3 pounds for the average cohort, that is, a 2% weight increase assuming constant height. We also find that the effect overshoots in the short run. However, a significant part of it remains even after two years. We also find that quitting smoking affects the extensive margin as well, with an implied elasticity of quitting smoking to obesity of 0.58. According to the CDC, an obese individual costs \$1,400 more to the health system than a healthy person and a smoker costs 3,200\$ more than a non-smoker. Taking this into consideration implies that, on average, a 1% decrease in the incidence of smoking has a net gain of \$1.4 billions: the cost of \$0.6 billions is offset by the gross benefit of \$2 billions.

The paper is organized as follows. In section two we provide a list of alternative explanations for the increase in obesity rates and a review of the economics literature linking smoking to weight increase. In section three we discuss the proposed methodology and analyze the data that we will use in the empirical analysis. In section four we estimate the static and dynamic models of the effect of quitting smoking on Body Mass Index using the constructed pseudo-panel. In section five we present an alternative to study the impact of quitting smoking on the probability of becoming obese. Section 6 concludes the paper.

2 Key Facts, Alternative Explanations and Literature Review

While smoking is the leading cause of death in the U.S., with up to 435,000 adult deaths each year, excess body weight is the third most important risk factor contributing to the burden of disease, most notably type II diabetes, hypertension, cardiovascular disease and disability (WHO, 2006). Flegal et al. (2005) calculate that in 2000, obesity caused 112,000 excess deaths in the US, while Mokdad et al. (2004) estimate 365,000 deaths due to obesity in that same year. Life expectancy of a 40 year old obese male is 6 years shorter than his non obese counterpart and for females the figure jumps to 7 years while for younger adults the effect is even higher (General Surgeon's 2001 report). Moreover, American life expectancy is projected to decrease due to obesity, for the first time since Civil War (Olshansky et al. (2005)).

As it happens with smoking, obesity carries with it several negative externalities and therefore the social cost of being obese is higher than the individual's. One of those externalities is the increase in health care utilization. Finkelstein et al. (2004) found that in 2003 weight problems represented a medical expenditure of \$75 billions in the U.S.. The Urban Institute updated this figure to 200 billions for 2008, half of which comes from Medicare and

⁴For instance, nowadays it is much harder to see a person smoking in a Hollywood movie.

Medicaid. Andreyeva et al. (2004) find that an obese person generates an average of \$700 more in health expenditures than a comparable non obese, a figure that is even larger than the increase in health costs due to smoking. Nowadays obesity accounts for 9.1% of all medical spending in the United States, up from 6.5 % in 1998, an average of \$1,400 more a year, although these costs are not distributed uniformly among the obese: as the degree of obesity worsens, the associated burden increases almost exponentially. Unfortunately the categories that account for the larger part of the burden are the ones rising at the highest rate (Andreyeva et al. (2004)). Labor productivity is another cost that is shared with the non obese. The U.S. Health and Human Services secretary estimated that obesity related problems costs \$13 billions to U.S. businesses⁵ and another study finds that on average, of every 100 workers, obese ones had lost 190 days per year, while normal weighted's 14 (Stevens (2004))

2.1 Alternative explanations

As we have seen above, the policy maker's concern about obesity is not unjustified⁶. But while most of obesity costs have been documented, we still lack a broad consensus about what caused the contemporary increase in weight and obesity rates. People put on weight when they consume more calories than they are burn off. Therefore, there are only three channels that can explain the mentioned increase. The first channel is that society, on average, started to consume more calories per day than before, keeping or reducing his physical activities. The second one is that agents decreased the rate of calorie burning, while consuming the same amount of calories. Finally it could be due to a change in the equation relating the ins and outs of calories.

Genetics is one possible explanation of the third channel. Those that were born weighing above a certain threshold are more prone to develop obesity problems (Baird et al. (2005), Serdula et al. (1993) and Whitaker et al. (1997)). Moreover, if both of the parents are obese, it is more likely that their child would reach the obesity threshold (Wrotniak et al. (2004), Whitaker et al. (1997)). So, as the proportion of obese increased in the adult population, more and more children were born at a higher risk of becoming obese during adulthood. This process might have induced a change in people's metabolism, making the burning of calories harder than before. But were this to be the case, a simple fixed effect regression would take this channel into account, unless this effect exhibited time variance. Metabolism does change through time, as adults find it harder to burn calories than youngsters. Consequently it is necessary to control for factors correlated with these changes.

The other two channels are trickier to measure, since they have several explanations that are definitely time varying. One possible justification for the decrease in the rate of calorie burning is related to technological change. Technology at work has changed dramatically in the last 30 years in favor of less physically intensive jobs (Lakdawalla and Philipson (2002)). Nowadays, the calories that used to be burnt during the labor intensive working hours have to be burnt during spare time. Therefore, the people that worked in physically intensive jobs drastically changed their pattern of physical activity without an equal change in consumption habits leading to an increase in permanent weight.

The other part of the equation has some possible explanations as well. Since 1976 food price has fallen by more than 12% compared to other goods (Lakdawalla and Philipson (2002)). Although this could be a viable explanation for the increase in average BMI from 1972 to 1976 and from 1984 to 1991, food prices increased sharply. Indeed, today's price of food relative to price of all items less food is only 5% lower than in 1972. However, what did change is the cost of the lowest quintile of energy density food compared to the highest quintile. Today, the cost of the former is around \$18.61/1000 kcal as compared to only \$1.76/1000 kcal for foods in the top quintile (Drewnowski et al. (2007) and Monsivais and Jacobsenski (2007)), revealing a disproportionately unequal increase in prices. On top of this,

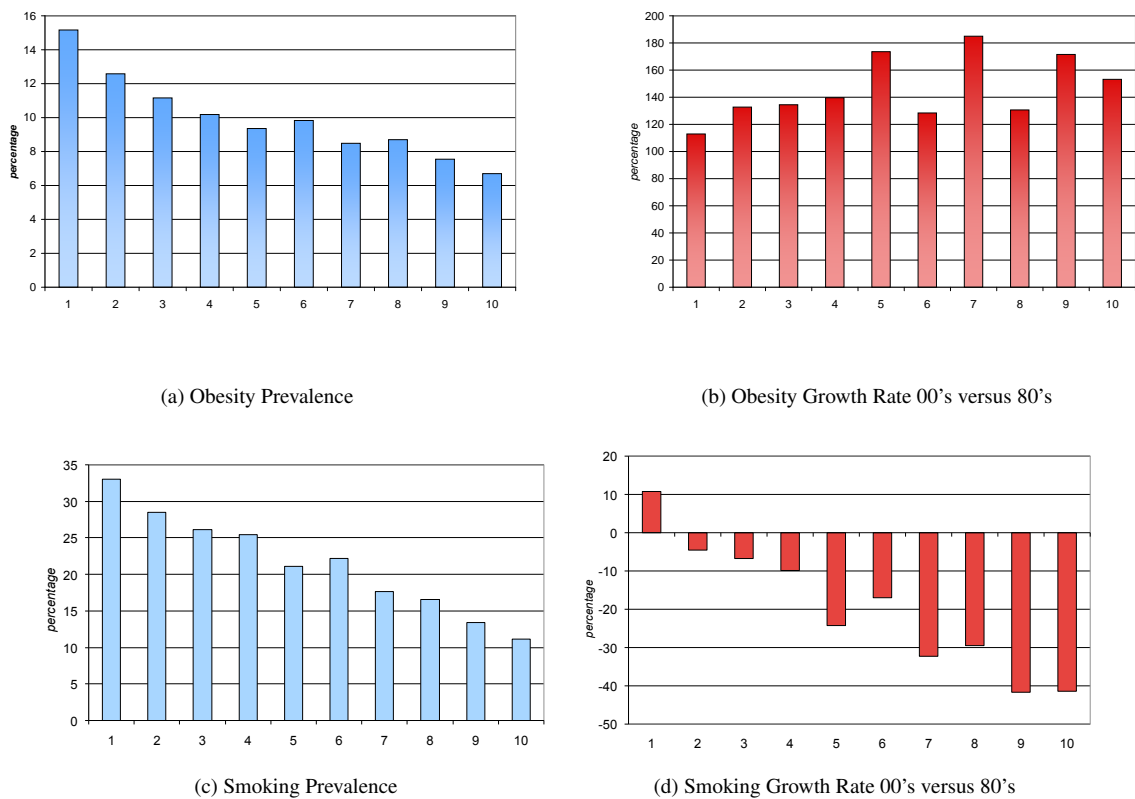
⁵The total cost is the result of health insurance costs related to obesity (\$8 billion), paid sick leave (\$2.4 billion), life insurance (\$1.8 billion), and disability insurance (\$1 billion).

⁶The World Health Organization has qualified obesity as a disease.

the increase in the relative price of cooking at home, coupled with a reduction in household time, has made it harder for people to eat healthier at home (Lakdawalla and Philipson (2002)). The increasing female participation in the labor market also made eating outside unavoidable for some households (Fokuda (2006) and Jacobsen (2006)). This problem has been confounded by the growth of the fast food industry⁷, decreasing the cost in time of eating outside.

Two features are clear from figure 2a, the prevalence of obesity across income deciles is such that the lowest decile of income has the largest ratio of obese, and, the decrease in the prevalence of obesity is almost monotonic with increases in income. In fact, the lowest income decile of the population has a rate of obesity that almost doubles that of the highest decile. Both the story of food prices and of technology at work are suitable for explaining the distribution of obesity across income.

Figure 2: Obesity and Smoking rate by Income decile



Source: Behavioral Risk Factor Surveillance System

However, figure 2b shows that the increase in obesity rates between the 80's and the 00's was similar for all deciles and even slightly larger for the richest ones. This suggests two issues. First, obesity increase shares some common characteristics among the different income deciles. Second and most importantly, the preceding explanations for weight increase are at odds with this stylized fact. To begin with, if technology at work changed the physical intensity of labor, it did so for the poorest deciles and not for the richest ones. The highest income earners, be it professionals or white collars, were already making little or no physical effort in their work. On the other hand, the poorest income deciles are more prone to budget constraints and therefore more affected by changes in the price of unhealthy food. But this is rarely the case with the higher incomes, as they tend to be more sophisticated in their eating habits and incorporate better food into their diet. Thus, it is hard to explain changes in obesity rates in the first deciles of income

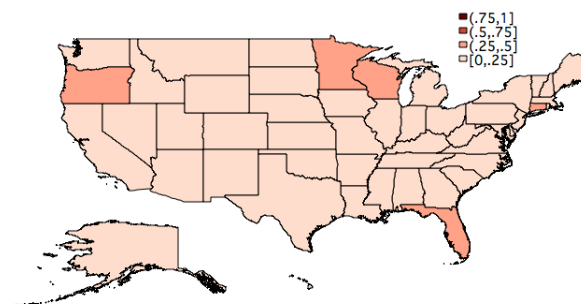
⁷13% in a 10 year period according to the National Retail Census.

using arguments that are best suited for the lowest income deciles.

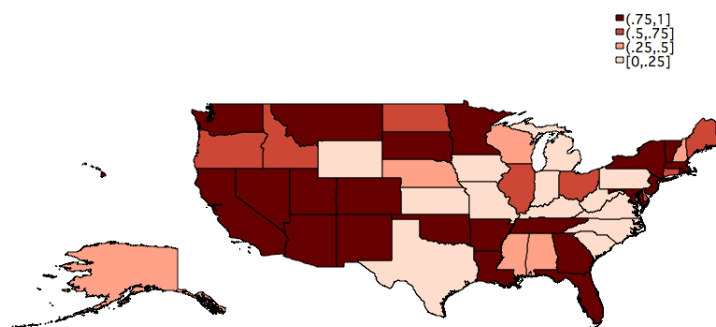
A good story for modern obesity rates has to explain not only the raise in BMI but also the fact that it affected all income deciles similarly, although it had more incidence on the highest income earners. The decline in smoking rates is a potential candidate for two reasons. First, it affected a significant part of the population. Indeed at the beginning of the eighties, almost 30% of the American population was an active smoker. Moreover, while by 2008 that ratio decreased to less than 20%, it is still remains a significant part of the American population (figure 2a). Second, that decline was due, among other reasons, to a very aggressive campaign to ban smoking for most public places. Society’s demands regarding a healthier environment forced the introduction of a number of changes in the regulation regarding tobacco use (figure 3a and 3b) reshaping the average American smoking habit. Government and private offices, restaurants, recreational facilities, retail stores and educational institutions, all of them suffered some sort of restriction which in some cases manifested in smoking bans within private buildings and their immediate surroundings. These restrictions, however, had an unequal impact. They affected the most those that worked in offices and ate frequently in restaurants. As a matter of fact, already by 1993 nearly 82% of indoor workers faced some restriction on workplace smoking and 47% worked in a 100% smoke-free environment (Farrelly et al. (1999))

Information policy regarding smoking was yet another reason that helps explain the decline in smoking rates. Smoking advertisements were banned from TV and other mass media and supported by an increase in published information focusing on the causal links between smoking and adverse health⁸. High income and educated individuals were at least as likely to be affected by the anti-smoking campaign as they were in a better position to accumulate, process and understand this information and correctly update their costs of smoking.

Figure 3: Clean Indoor Air Regulations and Excise Taxes: 1985 versus 2007



(a) CIA Regulations 1985

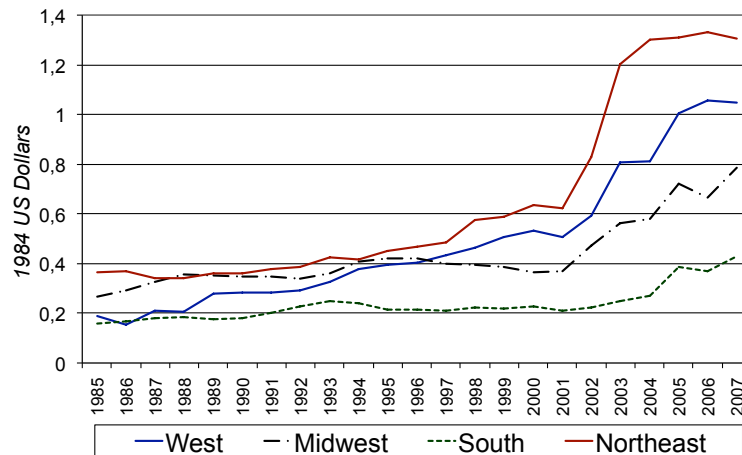


(b) CIA Regulations 2007

Source: Own Recopilation of State Laws Regarding Tobacco Use

⁸A policy that took full strength during the last two decades, beginning with the 1980 General Surgeon’s report on the subject.

Figure 4: Real Excise Taxes on Tobacco by Zone: 1985 - 2007



Source: Own Recopilation of State Laws Regarding Tobacco Use

2.2 Literature Review

Several authors have studied the weight impact of smoking in recent years. However, most of them have investigated the question in a reduced-form, that is, assuming that increases in tobacco prices reduce smoking rates and through this channel impact weight. While it is frequently assumed in the literature that this is actually the case (see for instance Chaloupka (1999)), price increase is not the only mechanism to induce people to quit nor is it the most relevant one. Chou et al. (2004) is the first paper we know in the economic literature to link the increase in BMI to smoking. The authors adapt a behavioral model of the determinants of obesity to pooled individual-level data from the Behavioral Risk Factor Surveillance System, matched with the prices of food cooked at home and fast food, tobacco and alcohol prices, and the number of per capita restaurants and fast foods chains, as well as indicators for the regulation regarding tobacco use in private offices and restaurants. They analyze the determinants of BMI in a reduced-form OLS regression with state level fixed effects and a quadratic time trend. Other regressors include the demographic characteristics of individuals, the prices of several commodities and the number of fast food restaurants. The authors account for the fact that certain regressors are likely to be related to BMI in a non-linear fashion. Among the main conclusions of the study, they find that increases in cigarette prices significantly increases BMI as well as obesity rates⁹ and also that it helps explaining a significant proportion of the increase in BMI (up to 20%). Therefore, the authors find that tobacco consumption substituted net calorie ingestion as a habit. This result is very important since it says that part of the increase in BMI is due to policy decisions.

However, the study has some potential flaws. Firstly, the channel of identification is that increases in cigarette prices and the tightening of the regulation regarding tobacco use induced people to quit smoking, reduced the frequency of smoking or deterred the starting of the habit. As mentioned above, there are other reasons, such as health problems, that could explain why some individuals quit the habit. Moreover, tobacco companies could be raising prices in response to a diminishing pool of smokers or authorities could be responding to tobacco derived health problems by raising taxes on its use. In addition, if smoking and eating are substitutes, then the significant effect should be found among perennial smokers or former smokers, but not among those who have never smoked. Unfortunately, the framework the authors use is unable to discriminate among the different subgroups.

Secondly, the authors do not attempt to control for unobserved heterogeneity among individuals. Because eating

⁹A unitary increase in cigarette price leads to an increase of 0.486 in BMI and a 10% increase in the cigarette price would raise by 0.445% the probability of becoming obese for an individual.

and smoking are closely connected to preferences then raises concerns about the consistency of the estimation. In particular, risk attitudes might will operate through the exclusion restriction. Thirdly, the study does not account for dynamics in the dependent variable. In the case of BMI this is certainly a problem since adjustment costs are non-negligible. Moreover, the estimated equation does not separate the short run effect from the long run one. A fourth issue is nonlinearities. The average effect might be significantly different from the effect in the obese and overweight sample. This is relevant because the health consequences of the tobacco policy would be higher if the effect is larger for the obese. Moreover, and perhaps more importantly, the reported elasticity of smoking to BMI and obesity is too large to truly believe in the results.

Finally, the regression is not satisfactorily robust. Using the same data set and a similar specification, Gruber and Frakes (2006) finds the opposite effect, that is, increases in tobacco prices significantly decreases BMI (\$1.00 rise in taxes lowers BMI by 0.151 and the probability of becoming obese by 1.5%). The main differences between the two papers arise due to the use of state excise tax on tobacco instead of tobacco prices and through differences in time effects estimation (the latter authors introduce year dummies rather than a quadratic time trend) . Gruber and Frakes (2006) also instruments the smoking decision by means of a 2SLS regression, where in the first stage they regress the smoking odds against the tobacco excise tax. However, even after correcting for the potential endogeneity, the resulting coefficients again are too large to be plausible. As in the Chou et al. (2004) their estimation considers neither unobserved heterogeneity and error clustering nor the dynamic problem.

Rashad (2006) performs a similar analysis of Chou et al. (2004) extending the dataset to food and caloric intakes. He separates the analysis to see how the increases in prices and regulation affected caloric intake and tobacco use. Contrary to what should be expected, increases in tobacco prices and regulation did not affect smoking but it did increase caloric intake while changes in food prices did not change caloric intake but changed smoking decision. Nevertheless, he does nothing to correct the mentioned problems in the previous specifications.

Baum (2009) addresses some of the issues of the previous papers through a difference in difference approach, using changes in cigarette prices as the treatment. People that smoked at least 100 cigarettes before the age of sixteen are assigned as the treated group and people that didn't smoke before this age as the control group. He finds a similar result to Chou et al. (2004), that is, a rise in either prices or taxes increases BMI and the likelihood of becoming obese, regardless of the time controls. However, two caveats should be mentioned. First, the study does not use the same dataset as the previous authors and therefore, comparison is limited. Second, he relies on the same assumption as the two previous papers, that raising cigarette costs will lead to a decrease in smoking.

In a very interesting and recent exercise, Courtemanche (2009) revisits Chou et al. (2004), Gruber and Frakes (2006) and Baum (2009) and puts them together using not only the contemporaneous cigarette price/tax but also their lags. He finds that while in the short run increases in cigarette prices might lead to opposite results, in the long run each and every one of the three specifications leads to a decrease in BMI. Moreover, he finds that the decrease in weight is due to both better eating and more exercise. However, because the data he uses is cross-sectional, matching the individual with previous period taxes might lead to an error, in particular if it is done at the state level. Also, the survey used has self reported answers and the error in reported food consumption and exercise should not be overlooked. In addition, a very small fraction of the observations was given the food complementary survey and sample size drops substantially. Last but not least, he uses only increases in the price/tax of cigarettes and does not look at the other dimensions of the anti-smoking campaign. Nonnemaker et al. (2009) splits the sample between smokers, ever smokers and non-smokers and they find that as 17.8% of the increase in BMI among former smokers between 1984 and 2004 is attributable to increases in cigarette prices, which translates into a difference of roughly 3.4 pounds but that among younger former smokers 57% is attributable to increases in cigarette prices. Also interestingly they replicate Chou et al. (2004) specification using tennis balls price and visits to the dentists and they find that those

two variables are relevant to explain BMI.

Eisemberg and Quinn (2006) is the only paper we found that does not rely on the assumption that changes in cigarette prices affects cigarette consumption. In the study the authors use the Lung Health Study, a randomized smoking cessation trial with 5,887 smokers. Unconventionally, however, the authors use weight instead of BMI as the dependent measure and find that the effect of quitting smoking is a weight increase of 10 kg. This paper solves some of the issues mentioned before, however, it is not clear if the entire smoking cessation sample do indeed quit permanently.

3 Data and Methodology

3.1 Data Set Description

The main source of data that we use is the Behavioral Risk Factor Surveillance System, for the period spanning 1984-2007. This is the same data set as in Chou et al. (2004) Gruber and Frakes (2006), with additional waves. The BRFSS is a phone survey designed as a series of independent cross sections with the intention of obtaining information regarding the prevalence of unhealthy habits and behavioral risks among the US population above 18 years and living in family households¹⁰. The BRFSS survey started in 1984 and since 1995 all states have been participating continuously. The number of yearly interviews has been constantly increasing and by 2007 it was more than 270,000. The survey is a rich source for demographic and economic status variables including state of residence, number of children, race, family income, education, marital status and age. The survey asks the subjects weight in pounds and height in foot and inches. We transform these measures into the metric correspondence and from this we calculate the Body Mass Index, calculated as height over weight squared. From this survey we also obtain information on tobacco and alcohol consumption, including whether the person has smoked more than 100 cigarettes during his/her life, whether he or she currently smokes, the number of cigarettes smoked, whether the individual has ever tried to quit and if the individual drinks regularly. Because the data in the survey is self-reported, in order to avoid extreme self reporting bias, we only include observations for people that reported a BMI above 13 and below 100, the complete valid sample yields us 3,286,800 observations¹¹.

Other sources of data are the Bureau of Labor for the state unemployment rate, consumer price index, food price and number of fast food restaurants, and the Bureau of Economic Analysis for the quarterly per capita income of the state which are used to control for the business cycle. Finally, we complete the data set with an index of regulations regarding tobacco use and the effective real tax on tobacco that we develop using data from the National Cancer Institute State Legislative Database Program. Following Chriqui et al. (2002) we account for all the effective changes in state regulations regarding tobacco use from 1970 to 2007 that affected the ability of a smoker to smoke in his daily activities. However, we only concentrated in those laws that had an effective enforcement.

In order to construct the index we identified seven different categories: Government offices, Private offices, Restaurants, Recreational public places, Hospitals, Educational facilities and Public Transport. The index goes from 0 to 5 for each category, except for transport that goes from 0 to 3. The higher the number, the tighter the regulation. The categories are 0 for no regulation, 1 whenever there is some restriction to smoke but does not impose a high cost on the smoker in terms of his time budget, two if smokers and non smokers have to be in a separated room, three if smoking is banned in certain areas, four if smoking is prohibited within the building and five if it is also prohibited in

¹⁰More information is available at www.cdc.gov/nccdphp/brfss.

¹¹In the first survey, information was only available for 15 states and the number of useful observations was around 23,882. Although the survey has been growing in scope and coverage, unfortunately the number and quality of questions changes through time. For instance the question on the number of cigarettes smoked is not available after 2000 and the drinking variable is not asked every year.

the surrounding areas of the building. For instance, a category 5 in Private office means not only that smoking is not allowed in private places of work, but also within a certain distance from the entrance to the building. Whenever the law creates an important exception, we subtract one point from the index. Because small and medium firms employ a large proportion of US workers, the deduction was considerably higher in case the law exempted this type of business. Using this regulatory data, we construct a new variable that tries to capture tightness of the regulations regarding tobacco consumption in the state. We add the punctuation the state received in each category and normalize the new variable by its maximum possible score to make it continuous between 0 and 1.

Table 2: Summary Statistics: Individual variables. 1985 - 2007

	Full Sample		Never-Smokers		Current		Past	
	Mean	Std. Dev.	Mean	Std. Dev.	Mean	Std. Dev.	Mean	Std. Dev.
Smoke Currently	0.23	0.42	0	0	1	0	0	0
Smoke Ever	0.49	0.5	0	0	1	0	1	0
BMI	26.49	5.59	26.47	5.63	25.78	5.46	27.14	5.54
Obese	0.20	0.403	0.21	0.41	0.17	0.38	0.23	0.42
Drink	0.53	0.50	0.48	0.50	0.59	0.49	0.57	0.50
Women	0.58	0.49	0.64	0.48	0.56	0.50	0.5	0.50
Age	47.29	16.22	45.71	16.56	43.8	14.54	53.41	15.26
White	0.81	0.39	0.78	0.41	0.81	0.39	0.86	0.35
Black	0.08	0.27	0.09	0.29	0.08	0.27	0.05	0.22
Hispanic	0.06	0.23	0.07	0.25	0.05	0.22	0.04	0.20
Married	0.59	0.49	0.61	0.49	0.50	0.50	0.64	0.48
Divorced	0.16	0.37	0.12	0.33	0.24	0.43	0.16	0.37
Widowed	0.09	0.28	0.09	0.28	0.07	0.26	0.11	0.31
Kids	0.46	0.50	0.48	0.50	0.50	0.50	0.38	0.48
School Dropout	0.11	0.31	0.09	0.28	0.16	0.37	0.11	0.31
High School	0.32	0.46	0.28	0.45	0.39	0.49	0.31	0.46
Some College	0.27	0.44	0.26	0.44	0.28	0.45	0.27	0.44
College	0.31	0.46	0.37	0.48	0.17	0.37	0.31	0.46
Real Income	40.8	22.65	42.77	22.91	34.6	20.8	42.17	22.72
Unemployed	0.04	0.20	0.03	0.18	0.07	0.26	0.03	0.17
Exercise	0.66	0.47	0.69	0.46	0.58	0.49	0.68	0.47
General Health	0.85	0.36	0.88	0.32	0.79	0.4	0.82	0.39

Note: All variables have 3,286,800 useful observations except for the Drink variable which has 2,892,973. The sample contains 1,685,770 never-smokers, 743,216 current smokers and 856,418 former smokers. Source: Behavioral Risk Factor Surveillance System 1985-2007

Table 3: Summary Statistics: Environmental Variables. 1985 - 2007

	Mean	Std. Dev.
Price Food Away	162.94	3.67
Price Food Home	160.41	4.69
Number Fast Food Restaurant per capita	1.83	0.32
Tobacco Price	2.8	0.8
Excise Tax on Tobacco	0.54	0.43
Alcohol Price	165.49	5.67
Tax on Beer	1.72	0.49
Clean Indoor Air Regulation Index	0.31	0.31
Restaurants	1.54	1.74
Private Offices	1.17	1.61
Government Offices	1.94	1.77
Recreational Places	1.81	1.78

Table 2 contains summary statistics of all the variables we use in the study. Several things are worth mentioning of this first exploration of the data. As we can see, the average sample individual is overweight. Almost 25% of the

sample smokes although with a large variance. This is due to the fact that throughout the years, smoking rates have diminished considerably. The unconditional average amount of cigarettes smoked in the sample is four. In order to control for other habits we include whether the individual drinks regularly and whether they exercise regularly. In the sample, 53% of the individuals reports to drink regularly¹², 66% reports doing exercise regularly, 46% of the sample has kids, 31% has a college degree and almost 60% is married.

Table 2 also reports the different summary statistics for the never-smoker, current smoker and past smoker groups. The first group is the one that shouldn't be affected by changes in taxes on tobacco or regulation regarding tobacco use. The second group is the one we would be interested in using in a randomized experiment of quitting smoking. Because that is not available, we are going to compare it to the third group, that is, quitters. As we can see, the last group is the one with the largest BMI, while smokers are the group with the lowest, this difference being statistically significant. The average profile of a quitter is usually is someone who is in their fifties, married, white and enjoys a higher level of education and real income than the average smoker. These statistics confirms our initial beliefs. It is hard to argue that technological change or food price changes are the main forces behind the increase in weight. Moreover, it shows that the group with the largest BMI is also the group that has stopped smoking. Table 3 reports the summary of the environmental variables. As we can see, most of the environmental variables have a large standard deviation, which basically implies large variation between states. Also, the price of eating at home is quite similar than the price of eating away for the whole period¹³. Finally government offices and recreational places are the one with the tightest policy against tobacco.

3.2 Econometric Methods

Individual weight is a stock variable and it is the result of the combination of genetic, metabolic, behavioral, environmental, cultural, and socioeconomic influences. Accordingly, weight increment is the result of consuming more calories than what is burnt. A natural question then is which of the factors is more relevant to explain the increase in U.S. obesity rate. Weight at birth, weight of the parents, gender and ethnicity are among the most relevant genetic variables that influence it. This group of variables are invariant through time and as a result, more related to the steady state weight and not to changes per se, although they might be deeply related to how calories are processed. In the group of cultural, behavioral and environmental variables the main determinants are civil status, family composition, education, place of residence, veteran of war, employment situation, industry, tenure, hours of work, household income, wife work status, health status, previous period weight and relevant habits. This second group of variables contains variables both constant in time and some that exhibit time variation. The third group of variables, socioeconomic, consists primarily of food prices, sin goods prices and regulations, all of them time variant. So, in order to investigate the effect of quitting smoking on the individual weight we have to control for this three groups of variables. Finally, in order to make weight comparable across individuals it is necessary to normalize it. This is usually done by dividing it by height squared, which is called Body Mass Index. This will be the outcome variable in our study.

So for individual i , who resides in state j at year t , the effect of quitting smoking on weight ideally would be estimated through the following equation:

$$BMI_{ijt} = \alpha + \beta_1 X_{ij} + \beta_2 Z_{ijt} + \gamma \text{Quit Smoking}_{ijt} + \delta_j + \delta_t + \eta_i + u_{ijt} \quad (1)$$

where X is a vector of time invariant individual socioeconomic factors, Z is a vector of other relevant time variant individual and economic variables, and u is an error term. Some of the variables mentioned above are not present

¹²Although only 13% are binge drinkers, results available on request.

¹³It would be much more interesting to replace these two variables with the price of different calories index, one for low density food, another for medium density food and a final one for high density food

in the BRFSS dataset but unfortunately correlated with both weight and quitting smoking. A second problem with the dataset is its cross-sectional structure which does not allow us to control for unobserved heterogeneity with fixed effects. Because, preferences for health can explain both BMI and smoking, not being able to include fixed effects for the individuals might bias the estimation. An additional problem, not related to the dataset, is the fact that quitting smoking, as a decision, might be influenced by BMI, as was previously explained in the introduction. As a result, the coefficient of interest in equation (1), that is γ , will be biased with no a priori idea of the direction.

Fortunately, the fact that most of the non available variables are fixed through time allows us to control for them by means of fixed effects. That is, if panel data would be available, this problem could be solved by treating η_i as a fixed effect, using a transformation of the model or parameterizing the conditional expectation of the individual effects as a function of the explanatory variables. Therefore, solving the unobserved heterogeneity problem means also solving the missing variables one. In order to do that we use cohort analysis. This technique, developed by Deaton (1985) and further improved by Browning et al. (1985), Moffit (1993) and Collado (1997) among others, allows us to control for fixed effects, use lags of variables as instruments. The basic idea of this procedure is to construct population means of the cohorts, in order to form a panel structure for the data. To do that, Deaton (1985) recommends to divide the population in cells with homogenous individuals and to form cohorts according to one or several characteristics which remains constant in time. For that purpose, in our dataset we could consider date of birth, sex, race and residential location.

Equation (1) then will be transformed into (2), where now BMI_{cqt} stands for the BMI of cohort c at quarter q and year t .

$$BMI_{cqt} = \alpha + \beta_1 X_c + \beta_2 Z_{cqt} + \gamma \text{Quit Smoking}_{cqt} + \delta_t + \eta_c + \epsilon_{cqt} \quad (2)$$

When analyzing cohort data we must bear in mind that all cohort variables¹⁴ are error ridden measurements of the true cohort population means. The advantage with respect to standard errors-in-variables models is that we can estimate the variances of the measurement errors using individual data. Moreover, if the size of the cohort is large enough, sample means approximate well enough their population counterparts.

We define n_{cqt} as the size of cohort c in quarter q of year t . Every element of \bar{X}_{cqt} , for example a dummy for education, is the average (proportion) of individuals in that category of education observed for individuals belonging to cohort c in quarter q of year t , and analogously for other variables in the model. The main estimation problem is that $\bar{\eta}_c$ is unobservable and likely correlated with some variables in \bar{X}_{cqt} . Therefore, equation (2) does not constitute an appropriate base for obtaining consistent estimates, unless the size of the cohorts is large enough. In this case, $\bar{\eta}_c$ is a good approximation to η_c , and we can replace $\bar{\eta}_c$ by a set of binary variables (fixed effects) one for each cohort. A natural estimator then, is the covariance or within groups estimator based on the weighted means of the cohorts, where the weights take into account potential heteroskedasticity between cohorts.

Let $\bar{X}_c = (\sum_{q=1}^Q \sum_{t=1}^T n_{cqt})^{-1} X_{cqt}$ be the average of the observed means for cohort c , and define \bar{Y}_c analogously. Then $\hat{\beta}_{WG}$ will be biased in small samples but it will be consistent as n_{cqt} tends to infinity if standard assumptions about second order moments are met. There exists a trade-off between variance and bias of the estimator. That is, the bigger is the number of cohorts (C), the smaller is their size (n_{cqt}). The trade-off has to be solved in such a way that the variation within cohorts is small, i.e. homogenous individuals, while the variation between cohorts is large, i.e. heterogenous cohorts. Identification of the true parameter requires that the expectation of each element conditional on the cohort identifying variables varies with time. On the other hand, as we have pointed before, enough people in

¹⁴This includes the cohort specific effect.

each group or cohort is necessary for the average within a group to be an unbiased estimator of the population mean. Browning et al. (1985) mention that 150 individuals per group is a relatively good number to avoid sampling bias. In this study, we are going to use only those cells with more than 100 individuals within.

3.2.1 Proxying quitting smoking using the BRFSS

Besides being a cross sectional study, the BRFSS does not ask retrospective questions regarding the date the person quit smoking. As a consequence, in order to define a person as a quitter we have to rely on whether the person has smoked in the past and he does not currently smoke. While a person fitting those characteristics is indeed a former smoker and therefore a quitter, we do not know since when he has quit smoking. Also, we cannot know whether he has relapsed from his habit or not. When we aggregate the data to form the different cohorts, this variable would give us the proportion of quitters within the different cells, and our identification will come from the variability in the proportion of quitters within a cell. Another alternative to proxy for quitting smoking is to use the change in the proportion of individuals currently smoking within a cell. Although we are not presenting results for this definition of quitting smoking, similar conclusions were obtained from it.

3.2.2 Dynamic Specification

Adjusting one's weight is a costly procedure that takes time. As a consequence, past period weight can be a determinant of today's. The BRFSS does not ask about weight in earlier time periods. Thus, previous authors were unable to incorporate dynamics into their estimations, with the resulting potential omitted variable bias in their estimations. Using cohort analysis also gives us the possibility of estimating dynamic models from individuals' observations at a single point in time. In this case, the equation to estimate is:

$$BMI_{cqt} = \alpha + \rho BMI_{c(q-1)t} + \beta_1 X_c + \beta_2 Z_{cqt} + \gamma \text{Quit Smoking}_{cqt} + \delta_t + \eta_c + \epsilon_{cqt} \quad (3)$$

It is well known that including lagged BMI leads to a bias if the panel is too short (Arellano and Bond (1991)). The methodology of Blundell et al. (1998) can be used to address that problem by means of a system GMM when individual data is used. Furthermore, Collado (1997) proposes an instrumental variables estimator based on first differencing the model, which corrects the error-in-variables problem for dynamic models in the context of cohort data.

The estimation procedure in those cases relies on the idea that internal lagged instruments can be found, if they are not correlated with future error terms. While the lagged dependent variable is correlated with past error terms and uncorrelated with the current and future error terms, some of the other variables are potentially endogenous given that they are correlated with the current error. Though, if we assume that they are uncorrelated with future error terms, the system GMM includes a restriction which assumes that although lagged BMI might be correlated with the unobservable, the first differences are uncorrelated with $\eta_c + \epsilon_{c,q,t}$, which implies that deviation from long term trends in BMI are not correlated with individual effects.

Fortunately, when the number of available periods is large enough (as in our case), the error-in-variables problem tends to disappear as shown in Nickel (1981), Browning et al. (1985) and Jiménez et al. (1998). Since we have data on almost 100 quarters, we can estimate the dynamic specification without instrumenting the lag of the BMI. Therefore, we have two potential methods to estimate consistently the effect of quitting smoking on weight in a dynamic setup.

3.3 A first exploration of the data

As a first attempt to understand the issues at hand, we replicate the results of both Chou et al. (2004) and Gruber and Frakes (2006), with some minor differences. The only correction we make for self-reporting bias is to restrict BMI to lie within the range of 13 to 100. In addition we replace tobacco prices as used in Chou et al. (2004) with data from the Tax Burden on Tobacco¹⁵.

The first two columns of Table 4 show our replication of the original formulation of Chou et al. (2004) with the original sample years and with the full sample years. The third and fourth column refer to the Gruber and Frakes (2006) specification with the years used in the published paper and with the complete waves respectively. The sixth column is the specification we will test.

A first thing to check is whether the estimated coefficients are sensitive or not to the number of waves included. As we can see, the Gruber and Frakes (2006) finding that BMI decreased with increases in tobacco prices is no longer significant once we use the 1985-2007 waves. Accordingly, the only result that does not depend on the sample is Chou et al. (2004), that is, raising tobacco prices leads to an increase in BMI. When we include quitting smoking as one of the determinants of BMI, the effect of the tax on tobacco and regulations regarding tobacco use is not significant. However, quitting smoking it is. This means that both Chou et al. (2004) and our specification share similar conclusions, although our specification does not rely on a reduced form assumption such that increases in tobacco prices leads people to stop smoking or that all the policies that decrease the prevalence of smoking are captured in the price of tobacco. Our next priority then, is to replicate the exercises of Chou et al. (2004) and Gruber and Frakes (2006) with cohort data and see the impact that unobserved heterogeneity has on the estimated coefficients.

4 Cohort Analysis

4.1 Cohort Definition

Cohorts are defined using the following characteristics: Year of birth, Gender and Geographical region of residence and data is aggregated by quarter and year. Since each cell is the average of individual observations within the cohort, dummy variables will be transformed into the proportion of people within a cell that have a certain characteristic. For instance, currently smoking is defined as either 0 or 1, therefore the transformed cohort variable will tell us the proportion of people among the cohort that smoke.

The structure of the sample in terms of the aggregation variables is the following:

- Year of birth: This grouping has 5 possible categories corresponding to different decades of birth. The first category is for those born before 1940 while the last one is for those born after 1970. The largest proportion of the male population was born during the 50's while the largest proportion of females were born before the 40's.
- Sex: The data set over represents females as they are 58% of the sample.
- Geographical Area: geographical location has been divided into the four categories that the Bureau of Labor uses to produce the CPI. The Southern region is the one more represented, while the Northern East region is the one with the fewest observations, both for males and females

¹⁵Chou et al. (2004) source their data from the ACCRA cost of living index, which is not publicly available, unlike our measure current measure.

Table 4: Replication Table: Chou and Gruber with individual data

	Chou's		Gruber's		Ours
	1985-1999	1985-2007	1985-2002	1985-2007	1985-2007
	b/se	b/se	b/se	b/se	b/se
Quitting Smoking					0.699*** (0.02)
Cigarette Price	0.490*** (0.13)	0.431*** (0.12)			
Cigarette Price Squared	-0.09*** (0.026)	-0.063*** (0.019)			
Tax Tobacco			-0.092*** (0.03)	-0.046 (0.05)	-0.031 (0.06)
Clean Indoor Air Regulation					0.072 (0.05)
Private Office	-0.144** (0.07)	-0.022 (0.05)	0.004 (0.05)	-0.038 (0.05)	
Restaurants	0.043 (0.05)	0.020 (0.05)	0.030 (0.04)	0.066 (0.05)	
Price Food Away	-0.389*** (0.06)	-0.412*** (0.09)	0.016*** (0.00)	0.017*** (0.00)	-0.217* (0.12)
Food Away Squared	0.001*** (0.00)	0.001*** (0.00)			0.001* (0.00)
Price Food Home	-0.090 (0.08)	0.110 (0.07)	-0.011*** (0.00)	-0.006 (0.00)	-0.059 (0.08)
Price Food Home Squared	0.000 (0.00)	-0.000* (0.00)			0.000 (0.00)
Fast Food Establishment	1.238*** (0.27)	1.600*** (0.54)	-0.317*** (0.05)	-0.406** (0.16)	-0.091 (0.20)
Fast Food Establishments Squared	-0.353*** (0.07)	-0.507*** (0.14)			
Price Alcohol	-0.013*** (0.00)	-0.012*** (0.00)			
Tax Beer			-0.017 (0.04)	-0.003 (0.11)	0.021 (0.11)
Drink					-0.898*** (0.02)
Exercise					-1.060*** (0.03)
Linear Trend	Yes	Yes	No	No	No
Year Dummies	No	No	Yes	Yes	Yes
Quarterly Dummies	No	No	No	No	Yes
State Dummies	Yes	Yes	Yes	Yes	Yes
Observations	938,746	2,956,132	1,499,474	2,956,132	2,636,461

The variables included but not reported are: Race (White, Afroamerican, Hispanic, other); Education (Drop out, High School, Some College, College), Marital status (Married, Separated, Divorced, Widowed, Single), Demographic (Gender, Age, Age squared, Children) and Income (Real Income, Real Income squared, Unemployed). No correction for miss reporting of the BMI. Observations are not weighted. White-Huber Robust Standard Errors clustered by State reported.

Using this cohort definition and taking into consideration that our dataset goes from the first quarter of 1984 to the fourth semester of 2007 we have a total of 3,680 potential observations. Unfortunately some data needed to adjust household income¹⁶ is not available in the 1984 survey, and as a result we dropped that year, leaving a total of 3,520 potential observations. Following Blundell et al. (1998), we dropped from the analysis those cells with less than 100 observations in order to avoid sampling bias¹⁷, resulting in 3,439 useful observations.

¹⁶Household income is coded as an interval variable so we adjusted the values it by means of a interval regression. In order to do this, several variables were used as predictors, including the number of individuals that live in the house, a question that is asked from 1985 onwards.

¹⁷Many states were only incorporated after 1995 and the number of interviews has also increased through time and thus some cells have very few observations within. Therefore this is does not represent an endogenous problem between BMI and the number of observations within a cell.

Table 5: Observations per cell

Male					
Decade of Birth	Region				<i>Total</i>
	West	Midwest	South	Northeast	
Before 1940	69,419	68,961	98,963	51,591	288,934
1940 - 1949	62,746	54,615	82,166	45,493	245,020
1950 - 1959	83,589	76,180	99,764	61,055	320,588
1960 - 1969	70,820	67,530	91,551	55,167	285,068
After 1970	61,532	52,875	76,052	41,122	231,581
<i>Total</i>	348,106	320,161	448,496	254,428	1,371,191

Female					
Decade of Birth	Region				<i>Total</i>
	West	Midwest	South	Northeast	
Before 1940	101,199	109,418	164,657	80,580	455,854
1940 - 1949	79,172	70,200	118,296	60,696	328,364
1950 - 1959	104,164	94,798	143,852	79,240	422,054
1960 - 1969	91,505	86,442	133,692	75,258	386,897
After 1970	80,195	70,150	114,740	57,355	322,440
<i>Total</i>	456,235	431,008	675,237	353,129	1,915,609

4.2 Static Specifications

4.2.1 Accounting for Unobserved Heterogeneity in Chou and Gruber Specifications

Since the pseudo panel allows us to apply regular fixed effects analysis, and with that to control for confounders like unobserved heterogeneity, we first explore how sensitive the results of the Chou et al. (2004) and Gruber and Frakes (2006) specifications are to a fixed effect regression. Recall that Chou et al. (2004) found that cigarette prices significantly increase BMI under a quadratic time trend and a quadratic effect of prices while Gruber and Frakes (2006) used a specification linear in the cost of cigarettes and yearly dummies.

As we can see in table 6, the linear effect of tobacco prices on BMI¹⁸ in the Chou et al. (2004) specification is now bit higher than in the OLS regression using individual data. Once fixed effects are included the value drops to almost half¹⁹. The Gruber and Frakes (2006) price effect is also reduced significantly after including fixed effects²⁰. This points out that unobserved heterogeneity is an important force behind the results obtained by both papers. The immediate question is whether the effect in a structural model is significant or not.

4.2.2 Analysis of Quitting Smoking with Fixed Effects and Instrumental Variables

In this subsection, we conduct regression analyses of the effect of quitting smoking on BMI in a structural model. Using the constructed cohort data, we are now able to estimate Equation 2 and correct for the potential bias that the simple OLS estimation has. For that, we introduce fixed effects in order to control for unobserved heterogeneity and we instrument the decision to quit smoking in order to estimate the causal effect on BMI. The specification is the same as Chou et al. (2004), except for the inclusion of the decision to quit, the non-parametric time controls, and the use of excise tax on tobacco instead of tobacco prices.

The decision to quit the habit of smoking is instrumented using a one year lag²¹ of the tax on tobacco and the

¹⁸the total effect at the average is $1.35+2*(-0.217)*2.55=0.24$.

¹⁹the total effect also drops almost half to 0.16.

²⁰However, it is true that the coefficients are higher in absolute value than when using individual data.

²¹In the present context, that is a four period lag, since our data is aggregated by quarters.

Table 6: Gruber and Chou using cohort data: OLS versus Fixed Effects

	Chou's		Gruber's	
	OLS b/se	FE b/se	OLS b/se	FE b/se
Tax Tobacco			-0.322*** (0.09)	-0.274*** (0.10)
Cigarette Price	1.35*** (0.35)	0.72** (0.30)		
Cigarette Price Squared	-0.217*** (0.07)	-0.109* (0.059)		
Private Office	0.000 (0.29)	0.281 (0.31)	0.073 (0.24)	-0.104 (0.27)
Restaurants	-0.275 (0.17)	-0.112 (0.17)	-0.097 (0.16)	0.020 (0.15)
Tax Beer			-0.558*** (0.09)	-0.174** (0.08)
Price Alcohol	-0.016*** (0.00)	-0.006** (0.00)		
Price Food Away	-0.497*** (0.09)	-0.351*** (0.08)	-0.003 (0.00)	0.007* (0.00)
Food Away Squared	0.001*** (0.00)	0.001*** (0.00)		
Price Food Home	0.028 (0.11)	0.023 (0.10)	-0.007** (0.00)	-0.002 (0.00)
Price Food Home Squared	-0.000 (0.00)	-0.000 (0.00)		
Fast food establishment	3.837*** (0.89)	4.072*** (1.04)	0.249 (0.16)	-0.244 (0.19)
Fast food establishment Squared	-1.011*** (0.26)	-1.135*** (0.27)		
Time Trend	Yes	Yes	No	No
Year Dummies	No	No	Yes	Yes
Observations	2,149	2,149	2,378	2,629

* $p < 0.10$; ** $p < 0.05$, *** $p < 0.01$

The variables included but not reported are: Race (White, Afroamerican, Hispanic, other); Education (Drop out, High School, Some College, College), Marital status (Married, Separated, Divorced, Widowed, Single), Demographic (Gender, Age, Age squared, Children) and Income (Real Income, Real Income squared, Unemployed). Observation weighted by the number of individual in the cell. Only cells with more than 100 observations within included White-Huber Robust Standard Error reported. Original sample years used

numbers of adults within a house. These instruments, from an ex ante point of view, satisfy the exclusion restriction of not being a predictor of contemporaneous BMI, as it is very hard to argue that local governments introduced changes in tobacco taxes in order to modify the weight of the voters. On the other hand, they are relevant for quitting smoking. A 10% increase in tobacco taxes leads to a 4% decrease in smoking prevalence (U.S. Department of Health and Human Services (2000)) and smoke free workplaces reduce smoking incidence by 6%. However, Lillard et al. (2010) shows that recall problems for the quitting decision generate attenuation bias, which decreases the power of our instruments. The lag of the number of adults in the house are included for over-identifying reasons and results do not change significantly without it. We report both Hansen's test for excluded restriction and Cragg-Donald's test for instruments weakness (Stock et al. (2002)), in order to know if they are good from an ex post analysis. The findings for *Quitting Smoking* are reported in Table 7.

Table 7: Quitting Smoking Effect on BMI

	A: OLS b/se	B: FE b/se	C: IV FE b/se	D: Log b/se	E: Num Cig b/se	F: Men b/se	G: Women b/se
Quitting Smoking	-0.333** (0.17)	0.261 (0.26)	4.990* (2.57)	0.174* (0.10)		5.320 (2.72)	2.723* (2.51)
Smoke Intensity					-0.257 (0.37)		
Observations	3,389	3,389	3,299	3,299	2,179	1,523	1,528
Hansen J test			0.08	0.09	5.62	1.31	0.46
Hansen J p-value			0.78	0.76	0.02	0.52	0.80
Excluded Instruments			1.00	1.00	1.00	2.00	2.00
Weak Stat Test			22.30	22.30	1.43	6.32	11.73

* $p < 0.10$; ** $p < 0.05$, *** $p < 0.01$

(A) is the OLS estimation. (B) is the Fixed Effect regression, (C) is the Fixed Effect regression instrumenting the decision to quit. (D) is similar to (C) but uses the log of BMI. (E) uses the change in the number of cigarette as the endogenous variable.

The variables included but not reported are: Race (White, Afroamerican, Hispanic, other); Education (Drop out, High School, Some College, College), Marital status (Married, Separated, Divorced, Widowed, Single), Demographic (Gender, Age, Age squared, Children) and Income (Real Income, Real Income squared, Unemployed), Prices and Regulations (Price Food Away, Price Food Home, Tax Tobacco, Tax Beer, Clean Indoor Regulations, Number of Fast Food Establishments) and Drink. Yearly and quarterly dummies included.

Quitting smoking is instrumented using Tax on Tobacco (-4) and Number of Adults in the House (-4)

Observation weighted by the number of individual in the cell. Only cells with more than 100 observations within are included White-Huber Robust Standard Error reported. BRFSS from 1985 to 2007

Column (A) contains the estimates for the decision to quit smoking using an OLS regression²². The effect of quitting smoking on BMI is negative and significant, something at odds with the same regression using the individual data, yet the effect is small in terms of BMI's variability. The specification in column (B) contains cohort fixed effects. As we can see, once unobserved heterogeneity is taken care of, the sign on the coefficient changes and the effect becomes insignificant. This means that the omission of unobserved confounders introduces a negative bias on the estimated coefficient. If all the bias would come from unobservables, then we should conclude that quitting smoking does not affect BMI.

Unfortunately, there are reasons to believe that even after controlling for unobservables, quitting smoking might be endogenous to weight. Once we instrument the decision to quit smoking, the effect of quitting smoking on weight increases and turns significant once again, as shown in column (C), which is further evidence of the direction of the bias in the OLS regression. Quitting smoking has a positive effect on weight once unobserved heterogeneity has been taken care of and the decision to quit instrumented. The implied elasticity of quitting smoking to BMI is 0.048²³. That is, a 10% decrease in the incidence of smoking leads to an increase of 3 pounds in the weight of the average cohort, that is, a 2% increase, assuming a constant height. A Hansen J test on the validity of the exclusion restriction fails to reject the null hypothesis, which means that the instruments are not rejected as such. This test is similar to Sargan's test but allows for heteroskedasticity and therefore more suitable for our specification. On the other hand, the Cragg-Donald's test on weak instruments is above 20, which means that the estimated effect is within the 5% bias interval, so we need not be worried that the results are driven by the wrong set of instruments.

Specification (D) re estimates equation (2) using the log of BMI instead of BMI. As we mentioned in the introduction, BMI is the result of dividing weight by height squared. Since the information in the survey is self reported, the measurement error regarding weight and height would not be linear and as a result the standard conclusions of measurement error in the endogenous variable do not apply here. In that sense, the log of BMI will log linearize the

²²As explained in Table 7, several controls were included. Except for the price of food at home, the availability of fast food restaurants and having children, all the other controls have the expected sign.

²³Full tables are available upon request.

error. The estimated effect in this case, 17%, is the growth rate of BMI after quitting smoking and it has a similar value to the one implied in the linear specification. Finally, column (E) studies the impact of decreasing the intensity of smoking but marginally. As we can see, small changes in rate of smoking does not seem to have a significant effect, although the effect is positive²⁴. This means that only the complete abandonment of the addiction has a significant impact on weight but minor therapies do not.

Several robustness checks have been performed to see how sensible the results are. We have repeated the experiment including in the cohort only those individuals for whom the habit of smoking is already developed, that is, with individuals 26 years or older. Also, we have tried with more lags of the instruments and with other instruments as well. Finally we have tried a different definition for quitting smoking. Instead of using the proportion of former smokers in the cell we used the change in the number of active smokers. In all the cases the result remains relatively unchanged, although the power of the instruments do change and sometimes the Hansen test is not rejected in the margin.²⁵

Gender Differences Column (F) and (G) repeats the experiment of (C) splitting the sample between men and women. As we can see, the effect of quitting smoking is significant for men but not for women²⁶. This is at odds with the medical literature (Basterra-Gortari et al. (2010), which finds that both women and men gain weight. The potential explanation for this difference is that women are penalized more than men when they deviate from their "optimal" weight. As a matter of fact, the likelihood of an obese or overweighted women getting married or being hired is significantly lower than that of a men of similar demographics (Hamermesh and Biddle (1994); V. Atella and Vuri (2007); Cawley (2000); Cawley and Danziger (2004) and Brunello and D'Hombres (2007)). As a result, women will act in consequence and will probably eat healthier than their men counterparts or do more exercise in order to avoid the negative consequences of gaining too much weight²⁷.

Persistence in Time Longitudinal data allows us to test in the context of the static model the time persistence of the effect. The evidence so far says that quitting smoking leads to an increase in weight, but there is no evidence of whether such an effect remains in time or if it vanishes after a few quarters. As a matter of fact, it could well be that the weight which is gained after leaving the addiction is lost in the middle run, like a Christmas or Thanksgiving day effect of eating too much. On the contrary, it could be that the effect remains there, changing permanently the weight of the person. To answer that question we have regressed BMI on the lags of quitting smoking, in order to see whether the effect remains significant after several periods.

Table 8 shows the effect of the different lags of quitting smoking on contemporaneous BMI. That is, specification (C) using the contemporaneous variable, the first lag, fourth (one year) and eighth (two years). The first thing to notice is that even after two years the effect remains significant and positive, although it diminishes moderately after one year, leaving the increase to an approximately 14% weight growth. This means that the steady state weight of the quitter increases after leaving the habit but the dynamics are such that the effect overshoots initially.

4.3 Results for the Dynamic Model

As commented in the introduction, adjustment costs make last period weight an important determinant of today's. Cohort data allows us the possibility to include this variable and instrument it using internal instruments. However,

²⁴the regressor here is changes in the number of cigarette smoked. As a result, the effect is positive for reductions. It should be noted that the question on the number of cigarettes smoked was discontinued after 2000 and therefore sample size is smaller.

²⁵Results available upon request.

²⁶As far as we are aware, this is the first study that finds a difference between men and women.

²⁷However, there is no evidence whether the health consequences of obesity differs between the two groups.

Table 8: Persistence in Time

	IV FE			
	0	(-1)	(-4)	(-8)
	b/se	b/se	b/se	b/se
Quitting Smoking	4.990*			
	(2.57)			
1st Lag Quitting Smoking		4.386**		
		(2.22)		
4th Lag Quitting Smoking			3.602*	
			(2.17)	
8th Lag Quitting Smoking				3.45*
				(2.04)
Observations	3,299	3,299	3,299	3,188
Hansen J test	0.08	0.03	1.17	0.227
Hansen p-value	0.78	0.86	0.28	0.6337
Excluded instruments	1	1	1	1
Weak Instrument Statistic	22.30	24.92	18.96	23.37

* $p < 0.10$; ** $p < 0.05$, *** $p < 0.01$

Same controls as in the previous regression. Observation weighted by the number of individual in the cell. Only cells with more than 100 observations within included White-Huber Robust Standard Error reported. BRFSS from 1985 to 2007

because the panel is large enough, in principle the usual Arellano-Bond problem should not be present here. Nevertheless, we have estimated equation (3) instrumenting and without instrumenting BMI's lag.

Table 9 presents the results of the effect of quitting smoking in equation (3). Specification (F) includes cohort fixed effects and instruments the decision to quit smoking²⁸. Specification (G) instruments lagged BMI using the difference in the lag of BMI, as in Collado (1997). Specification (H) uses the log(BMI) as the independent variable and its lag as one of the regressors.

In the first three specifications, H, I and J, Quitting Smoking is positive and significant and of a similar magnitude as in the static model. In this context, a 10% decrease in the incidence of smoking leads to a weight increase of about 3 pounds. Lagged BMI is positive and significant in all three specifications, although the magnitude substantially changes when it is instrumented. As a result, the effect of quitting smoking is similar even after taking into consideration the initial situation of the stock variable. On the other hand, the static model conclusions about the differential effect between women and men are also present in the dynamic set up. As we can see, quitting smoking has a significant effect only for men.

²⁸Non reported controls are the same as in specification (C) while the instruments for decision to quit smoking are Tax on Tobacco (-4, -8 and -12).

Table 9: Dynamic setup

	IV FE				
	H: No Ins for BMI (-1)	I: Ins for BMI (-1)	J: Log BMI	K: Women	L: Men
	b/se	b/se	b/se	b/se	b/se
Quitting Smoking	4.426** (2.20)	5.121** (2.42)	0.155* (0.08)	3.059 (2.44)	5.290* (2.74)
Lagged BMI	0.433*** (0.02)	0.069* (0.04)		0.165*** (0.02)	0.023 (0.03)
Lagged log(BMI)			0.470*** (0.02)		
Observations	3,299	3,299	3,299	1,528	1,523
Hansen J test	1.50	0.52	1.56	0.37	1.44
Hansen p-value	0.47	0.77	0.46	0.83	0.49
Exc Ins	2.00	2.00	2.00	2.00	2.00
Weak Stat Ins	16.33	12.29	16.30	11.71	6.23

* $p < 0.10$; ** $p < 0.05$, *** $p < 0.01$

The variables includes but not reported are: Race (White, Afroamerican, Hispanic, other); Education (Drop out, High School, Some College, College), Marital status (Married, Separated, Divorced, Widowed, Single), Demographic (Gender, Age, Age squared, Children) and Income (Real Income, Real Income squared, Unemployed), Prices and Regulations (Price Food Away, Price Food Home, Tax Tobacco, Tax Beer, Clean Indoor Regulations, Number of Fast Food Establishments) and Drink.

Quitting smoking is instrumented using Tax on Tobacco (-4, -8, -12) and the Lag of BMI using the difference of it.

Observation weighted by the number of individual in the cell. Only cells with more than 1000 observations within included White-Huber Robust Standard Error reported. BRFSS from 1985 to 2007

4.4 Robustness Check: Different Cohort Definition

To conclude this section we redefinethe structure of the cohort. Cohort definition plays an important role in controlling for unobserved heterogeneity and a valid question is whether our results are driven by a particular definition. To see how sensitive the results are, we introduced race as one of the variables that define the cohort²⁹.

As a result of this new definition, more cohorts are added which allow us to get more variation and as before we only utilize those cohorts with more than 100 individuals³⁰. Table 10 re estimates specification A, B, C and D using the new cohort definition.

With this new definition we reduce the scope for bias at the expense of increased variance of the estimator. Nevertheless, similar results obtain³¹. As we can see, the effect of Quitting Smoking in the static specification (C*) is positive and significant as in the previous cohort definition, although the implied weight growth rate is 14% instead of 19%. In the dynamic specification (F*) the effect is again positive and significant and of the same magnitude as in the previous cohort definition. As a consequence, the redefinition of the cohort does not bring any substantial modification to the conclusions. We safely conclude that quitting smoking increases permanently the weight of a person.

5 The Extensive Margin: An Investigation on the Probability of becoming Obese

To conclude the analysis of cohort data in the context of weight and smoking, we should have a better understanding of the impact that quitting smoking has on the increase in the probability of becoming obese.

²⁹We tried also to aggregate using month instead of quarter and using States instead of Regions. Similar results were obtained, although the number of cohorts with more than 100 observations was considerably lower.

³⁰In this case only 67% of the cohorts remains after removing those with less than 100 observations.

³¹The coefficients are slightly smaller than before and the OLS estimation (A*) is now positive, although not significant as before.

Table 10: Quitting Smoking Effect on BMI: Cohort definition including Race

	A*:OLS	B*:FE	C*:IV FE Static	H*: IV FE Dynamic
	b/se	b/se	b/se	b/se
Quit Smoking	0.253 (0.21)	0.635*** (0.20)	3.071* (1.73)	3.402** (1.69)
Obs	4,971	4,971	4,783	4,783
Hansen			2.70	1.87
Hansen p-value			0.26	0.39
Excluded			2.00	2.00
Weak Instrument Statistic			27.12	26.00

* $p < 0.10$; ** $p < 0.05$, *** $p < 0.01$

The variables includes but not reported are: Education (Drop out, High School, Some College, College), Marital status (Married, Separated, Divorced, Widowed, Single), Demographic (Gender, Age, Age squared, Children) and Income (Real Income, Real Income squared, Unemployed), Prices and Regulations(Price Food Away, Price Food Home, Tax Tobacco, Tax Beer, Clean Indoor Regulations, Number of Fast Food Establishments) and Drink. Yearly and Quarterly dummies included.

Quitting smoking is instrumented using Tax on Tobacco (-4 and -8) and Number of Adults in the House (-4)

Observation weighted by the number of individual in the cell. Only cells with more than 100 observations within included White-Huber Robust Standard Error reported. BRFSS from 1985 to 2007

A natural specification to investigate the effect of a set of variables on the probability of being obese, given a set of covariates X would be $E[p(Obese)|F(X'\vartheta)]$ where the standard choice of F is the logistic function of the form $\Lambda(z) = \frac{e^z}{1+e^z}$ ³², that evaluates the expectation by nonlinear least squares. Unfortunately, as discussed throughout the paper, the explanatory variable of interest, quitting smoking, is potentially correlated with the error term. In addition unobserved heterogeneity can bias the estimation. Each of these problems could be dealt with separately. But the two at the same time are much harder to solve.

A more appealing approach to dealwith these concerns simultaneously, is an equation of the form $p(Obese) = \Lambda(X'\beta + u)$, where u is correlated to X but not to set of instruments Z. Using the logistic transformation of the obesity variable into $y = F^{-1}(p(Obese)) = \log(\frac{Obese}{1-Obese})$ the model now allows one to linearly instrument the variables and even use fixed effects through the generalized method of moments as in Arellano and Bover (1995b).

Obesity has been traditionally defined as BMI above 30, while overweight is a BMI between 25 and 30. Although thesethresholds are widely used, critics point out that thesetwo measures do not take into consideration different bone structures or different lifestyles. For instance, American football players will weighmore than a person of their same height, yet in general one would not consider them as overweightor obese. Therefore, we implementdifferent thresholds to determine the participation rate, that is, whether an individual is obese or not, going from a BMI of 25 to a BMI of 40. Consequently, for each threshold the aggregation of individuals in each cohort that are obese according to the threshold, gives us the proportion of obese in each category. This set of variables is the one we used to estimate whether quitting smoking affects the probability of becoming obese. Equation (4) represents the dynamic specification in which we assume that the probability of being obese is affected by its own past

$$\log\left(\frac{Obese}{1-Obese}\right)_{c,j,t} = \alpha + \rho BMI_{c,j,t-1} + \beta X_{c,j,t} + \gamma \text{Quit Smoking}_{c,j,t} + \delta_j + \delta_t + \eta_c + u_{c,j,t} \quad (4)$$

In our exercise we repeatedly estimate a static ($\rho = 0$) and a dynamic version of Equation 4 by varying the threshold for obesity. Figure 5 presents the implied elasticities of obesity to quitting smoking for the static and dynamic versions of the model.

³²Alternatively the probit function can also be used.

Figure 5: Elasticity of the Effect of Quitting Smoking on different thresholds of Obesity: Static Model

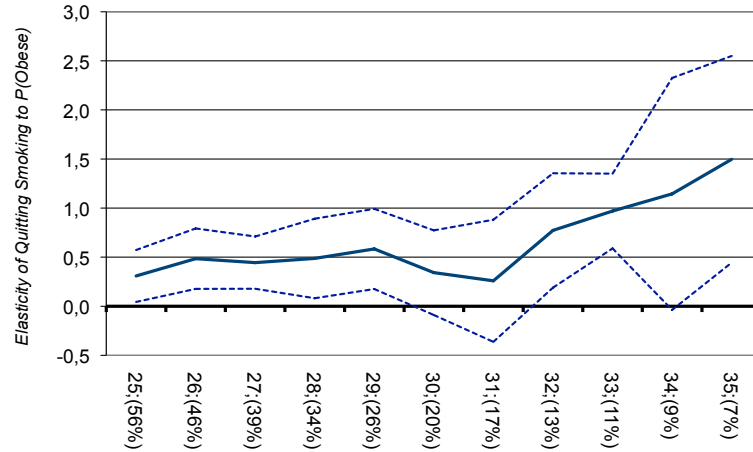
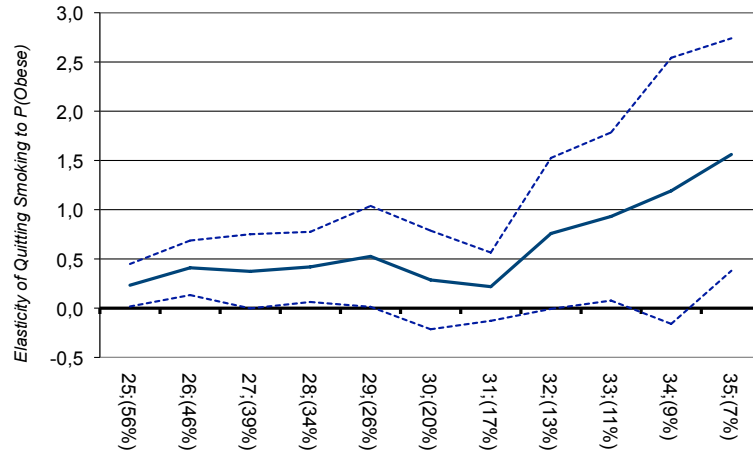


Figure 6: Elasticity of the Effect of Quitting Smoking on different thresholds of Obesity: Dynamic Model



As we can see in Figure 5 and 6, the elasticity of the probability of becoming obese after quitting smoking is positive and significant both for the static and the dynamic specification³³. However, due to a diminishing sample size, standard errors increase exponentially above the 30 threshold. Consequently, a 1% decrease in the incidence of smoking leads to an increase in the probability of becoming moderately obese by 0.58%. However, there is no significant evidence that the probability of becoming severely obese is affected.

³³In a model with the regressors in logs is calculated as $\hat{\xi} = \hat{\beta}(1 - \hat{p})$.

6 Conclusions

Policy makers are enacting a great number of new policies that aim at reducing health risks such as tobacco consumption and obesity. This study contributes to a very relevant policy question: Do we have to worry about the implementation of policies that aim to reduce one health risk in the society without internalizing the externalities? This is a question similar to that of the theory of the second best: in a context of multiple market imperfections, reducing one imperfection does not guarantee an improvement in welfare.

This paper studies the consequences that reducing smoking rates on obesity. We use a structural model that has the advantage that it is not necessary to assume that people stop smoking through higher cigarette prices. Instead the treatment, in this case quitting smoking, is incorporated in the estimation to evaluate its impact on BMI. In addition we instrument the decision to quit smoking and use cohort data techniques to control for unobserved heterogeneity.

We find that reducing the incidence of smoking in society leads to another disease which can potentially be as bad as the one that is removed. We should remember that while smoking kills prematurely up to 435,000 adults each year, it is estimated (Mokdad et al. (2004)) that obesity kills 365,000 and the gap between these statistics is closing down quickly.

We show that smokers increase their weight significantly after they leave the habit of smoking. This conclusion is robust to the introduction of dynamics into the estimation and to changes in the definition of the cohort. According to our results a 10% decrease in the incidence of smoking leads to an increase of 2.2 pounds to 3 pounds for the average cohort, that is, a 2% weight increase for a constant height. We also find that the effect overshoots. However, a significant part of it remains even after two years.

The results indicate that both unobserved heterogeneity and the endogeneity of the decision to give up smoking downward biases the effect of quitting. We also show that marginally reducing the number of cigarettes that a person smokes does not have a significant effect on weight. This means that the effect on weight comes through the extensive margin of the substitution effect, and not from the intensive margin. Another relevant finding is that quitting smoking only significantly affects the weight of the male population and not the female population.

Using logistic analysis we have also shown that quitting smoking leads to an increase in the odds of becoming overweight and obese. According to our findings, the elasticity of quitting smoking to obesity is 0.58. The Department of Health and Human Services has estimated that the average cost of healthcare for a person is \$8,000, while for a smoker it is \$11,200, that is, an additional \$3,200, and for an obese it is \$9,400. Given that 20% of the adult population currently smokes, 1% decrease in the incidence of smoking would then have an average benefit of \$2 billions. However, once we take into consideration the elasticity of quitting smoking to obesity, the net average benefit decreases to \$1.4 billions.

Our results suggest that for successful implementation, anti-smoking campaigns should be coordinated with campaigns for obesity reductions, be it in the form of a better diet, more exercise or both strategies combined. If society is demanding more tight policies regarding habits with negative externalities on health, people should be prepared to pay a larger cost than what was previously thought. Although the net benefit is estimated to be positive, we risk that individuals quit a habit only to substitute it with another without reducing the cost on public health.

References

Acs, Zoltan J. and Alan Lyles, eds, *Obesity, Business and Public Policy*, Edward Elgar, 2007.

Adda, Jande and Francesca Cornaglia, "Taxes, Cigarette Consumption, and Smoking Intensity," *American Eco-*

nomics Review, September 2006, 96 (4), 1013–1028.

Adhikari, B., J. Kahende, A. Malarcher, T. Pechacek, and V. Tong, “Smoking-Attributable Mortality, Years of Potential Life Lost, and Productivity Losses, United States, 2000-2004,” *Morbidity and Mortality Weekly Report*, 2008, 57 (45), 1226–1228.

Andreyeva, Tatiana, Roland Sturm, and Jeanne S. Ringe, “Moderate and Severe Obesity Have Large Differences in Health Care Costs,” *Obesity Research*, December 2004, 12 (12), 1936.

Arellano, Manuel and Olympia Bover, “Another look at the instrumental variable estimation of error-components models,” *Journal of Econometrics*, July 1995, 68 (1), 29–51.

— **and —**, “Female labour force participation in the 1980s: the case of Spain,” *Investigaciones Economicas*, May 1995, 19 (2), 171–194.

— **and Stephen Bond**, “Some Test of Specification for Panel Data: Monte Carlo Evidence and an Application to Employment Equations,” *The Review of Economic Studies*, April 1991, 58 (2), 277–297.

Armour, B., T. Wollery, A. Malarcher, T. Pechacek, and C. Husten, “Annual smoking attributable mortality , years of potential life lost, and productivity losses - United States, 1997-2001,” *Journal of the American Medical Association*, 2005, 294, 788–789.

Asfaw, Abay, “The Role of Food Price Policy in Determining the Prevalence of Obesity: Evidence from Egypt,” *Review of Agricultural Economics*, 09 2006, 28 (3), 305–312.

Atella, N. Pace V. and D. Vuri, “Wages and Weight in Europe: Evidence using Quantile Regression,” Working Paper 23, Centre for Household, Income, Labour and Demographic Economics 2007.

Baird, J., D. Fisher, P. Lucas, J. Kleijnen, H. Roberts, and C. Law, “Being big or growing fast: systematic review of size and growth in infancy and later obesity,” *Obesity Research*, October 2005.

Barendregt, Jan J., Luc Bonneuxand, and Paul J. van der Maas, “The Health Care Costs of Smoking,” *New England Journal of Medicine*, 1997, 337, 1052–1057.

Basterra-Gortari, F. J., Lluís Forga, Maira Bes-Rastrollo, Estafanía Toledo, J. A. Martínez, and M. A. Martínez González, “Evolución de los cambios en el peso corporal según hábito tabáquico: análisis longitudinal de la cohorte SUN,” *Revista Española de Cardiología*, 2010, 63, 20–27.

Baum, Charles L., “The Effects of Cigarette Costs on BMI and Obesity,” *Health Economics*, 2009, 18, 3–19.

Blundell, Richard, Alan Duncan, and Costas Meghir, “Estimating Labor Supply Responses Using Tax Reforms,” *Econometrica*, July 1998, 66 (4), 827–862.

— **and Stephen Bond**, “Initial conditions and moment restrictions in dynamic panel data models,” *Journal of Econometrics*, August 1998, 87 (1), 115–143.

Browning, M., A. Deaton, and M. Irish, “A profitable approach to labour supply and commodity demand over the life-cycle,” *Econometrica*, 1985, 53, 503–543.

Brunello, Giorgio and Béatrice D’Hombres, “Does Body Weight Affect Wages?,” *Economics & Human Biology*, 2007, 5, 1–19.

Burkhauser, Richard V. and John Cawley, “Beyond BMI: The value of more accurate measures of fatness and obesity in social science research,” *Journal of Health Economics*, March 2008, 27 (2), 519–529.

- Carbone, Jared C., Snorre Kverndokk, and Ole Jorgen Røgeberg**, “Smoking, health, risk, and perception,” *Journal of Health Economics*, July 2005, 24 (4), 631–653.
- Carpenter, Christopher, Sabina Postolek, and Casey Warman**, “PUBLIC-PLACE SMOKING LAWS AND EXPOSURE TO ENVIRONMENTAL TOBACCO SMOKE (ETS) IN PUBLIC PLACES,” Working Paper Series 15849, National Bureau of Economic Research March 2010.
- Cawley, John**, “Body Weight and Women’s Labor Market Outcomes,” Working Paper 7841, National Bureau of Economic Research August 2000.
- **and Sheldon Danziger**, “OBESITY AS A BARRIER TO THE TRANSITION FROM WELFARE TO WORK,” Working Paper 10508, National Bureau of Economic Research May 2004.
- CDC**, “Sustaining State Programs for Tobacco Control: Data Highlights 2006,” Technical Report, Centers for Disease Control and Prevention 2006.
- Chaloupka, F.**, “Macro-social influences: the effects of price and tobacco-control policies on the demand for tobacco products,” *Nicotine and Tobacco Research Supplement*, 1999, *Supplement 1*, S105–S109.
- **and H. Saffer**, “Clean indoor air laws and the demand for cigarettes,” *Contemporary Policy Issues*, 1992, 10, 72–83.
- Chang, Virginia and Diane Lauderdale**, “Income Disparities in Body Mass Index and Obesity in the United States, 1971-2002,” *Archives of International Medicine*, 2005, 165, 2122–2128.
- Chou, Shin-Yi, Michael Grossman, and Henry Saffer**, “An economic analysis of adult obesity: results from the Behavioral Risk Factor Surveillance System,” *Journal of Health Economics*, May 2004, 23 (3), 565–587.
- , — , **and** — , “Reply to Jonathan Gruber and Michael Frakes,” *Journal of Health Economics*, March 2006, 25 (2), 389–393.
- Chriqui, J., M. Frosh, L. Fues, R. el Arculi, and F. Stillman**, “State laws on youth access to tobacco: an update, 1993-1999,” *Tobacco Control*, 2002, 11, 163–166.
- Clark, A. and F. Etile**, “Health changes and smoking: an economic analysis.,” *Tobacco Control*, 2006, 41, 427–445.
- Colditz, Graham A.**, “Economic Costs of obesity,” *American Journal Clinical Nutrition*, 1992, 55, 5035–5074.
- Collado, María Dolores**, “Estimating dynamic models from time series of independent cross-sections,” *Journal of Econometrics*, 1997, 82 (1), 37–62.
- Costa, Doris L. and Richard H. Steckel**, *Long-term trends in health, welfare, and economic growth in the United States. Health and welfare during industrialization*, NBER, 1997.
- Courtemanche, C.**, “Rising cigarette prices and rising obesity: Coincidence or unintended consequence?,” *Journal of Health Economics*, 2009, 28, 781–798.
- Cutler, David, Edward Glaeser, and Jesse Shapiro**, “The Growth of Obesity and Technological Change: A Theoretical and Empirical Examination,” NBER Working Papers 9446, National Bureau of Economic Research, Inc May 2003.
- Deaton, Angus**, “Panel Data from Time Series of Cross Sections,” *Journal of Econometrics*, 1985, 30, 109–126.

- Drewnowski, A., P. Monsivais, M. Maillot, and N. Darmon**, “Low-Energy-Density Diets Are Associated with Higher Diet Quality and Higher Diet Costs in French Adults,” *Journal of the American Dietetic Association*, 2007, 41 (6).
- Eisemberg, Daniel and Brian C. Quinn**, “Estimating the Effect of Smoking Cessation on Weight Gain: An Instrumental Variable Approach,” *Health Research and Educational Trust*, December 2006, 41 (6), 2255–2264.
- Farrelly, Matthew C., Terry F. Pechacek, Kristin Y. Thomas, and David Nelson**, “The Impact of Tobacco Control Programs on Adult Smoking,” *American Journal of Public Health*, February 2008, 98 (2).
- , **William N. Evans, and Andrew E. S. Sfekas**, “The impact of workplace smoking bans: results from a national survey,” *Tobacco Control*, 1999, 8, 272–277.
- Finkelstein, E., I. Fiebelkorn, and G. Wang**, “State level estimates of annual medical expenditures attributable to obesity,” *Obesity Research*, 2004, 12, 18–24.
- Finkelstein, Eric A., Christopher J. Ruhm, and Katherine M. Kosa**, “Economic Causes And Consequences Of Obesity,” *Annual Review of Public Health*, 2005, 26, 239–257.
- , **Ian C. Fiebelkorn, and Guijing Wang**, “National Medical Spending Attributable To Overweight And Obesity: How Much, And Who’s Paying?,” *Health Affairs*, May 2003, 3.
- Flegal, Katherine M.**, “The Effects of Changes in Smoking Prevalence on Obesity Prevalence in the United States,” *American Journal of Public Health*, August 2007, 97 (8).
- , **Barry I. Graubard, David F. Williamson, and Mitchell H. Gail**, “Excess Deaths Associated With Under weight, Over weight, and Obesity,” *JAMA*, 2005, 293 (15), 1861–1867.
- Fokuda, K.**, “A cohort analysis of female labor participation rates in the U.S. and Japan,” *Review of the Economics of the Household*, 2006, 4 (4), 379–393.
- Greene, W., M. Harris, and P. Maitra**, “A Bivariate Latent Class Correlated Generalized Ordered Probit with an Application to Modelling Obesity Levels,” December 2007. Mimeo.
- Grossman, Michael**, “Policy Watch: Alcohol and Cigarette Taxes,” *Journal of Economic Perspectives*, Fall 1993, 7 (4), 211–22.
- Gruber, Jonathan**, “Tobacco at the Crossroads: The Past and Future of Smoking Regulation in the United States,” *Journal of Economic Perspectives*, Spring 2001, 15 (2), 193–212.
- **and Michael Frakes**, “Does falling smoking lead to rising obesity?,” *Journal of Health Economics*, March 2006, 25 (2), 183–197.
- Hamermesh, Daniel S. and Jeff E. Biddle**, “Beauty and the Labor Market,” *The American Economic Review*, December 1994, 84, 1174–1194.
- Jacobsen, J.**, *The Economics of Gender*, Blackwell Publishing, 2006.
- Jacobson, Peter D., Jeffrey Wasserman, and John R. Anderson**, “Historical Overview of Tobacco Legislation and Regulation,” *Journal of Social Issues*, 1997, 53, 75–95.
- Jiménez, Sergi, José María Labeaga, and Angel López**, “Participation, Heterogeneity and Dynamics in Tobacco Consumption: Evidence from Cohort Data,” *Health Economics*, 1998, 7 (5), 401–414.

- Lakdawalla, Darius and Thomas Philipson**, *Economics of Obesity*, Elgar, 2006.
- **and Tomas Philipson**, “The Growth of Obesity and Technological Change: A Theoretical and Empirical Examination,” NBER Working Papers 8946, National Bureau of Economic Research, Inc May 2002.
- McCaul, Kevin D., Jill R. Hockemeyer, Rebecca J. Johnson, Kimberlee Zetocha, Kathryn Quinlan, and Russell E. Glasgow**, “Motivation to Quit Using Cigarettes: A Review,” *Addictive Behaviors*, 2006, 31 (1), 42–56.
- McTigue, Kathleen M., Joanne M. Garrett, and Barry M. Popkin**, “The Natural History of the Development of Obesity in a Cohort of Young U.S. Adults between 1981 and 1998,” *Annals of Internal Medicine*, 2002, 136, 857–864.
- Mercer, Hawna L, Lawrence W Green, Abby C Rosenthal, Corinne G Husten, Laura Kettel Khan, and William H Dietz**, “Possible lessons from the tobacco experience for obesity control,” *American Journal Clinical Nutrition*, 2003, 77(suppl).
- Michaud, Pierre-Carl, Giorgio Brunello, and Anna Sanz de Galdeano**, “The Rise in Obesity Across the Atlantic: An Economic Perspective,” *Economic Policy*, 2009.
- Mizoue, Tetsuya, Ryoji Ueda, Noritaka Tokui, Yoshiyuki Hinob, and Takesumi Yoshimuraa**, “Body mass decrease after initial gain following smoking cessation,” *International Journal of Epidemiology*, 1998, 27, 984–988.
- Moffit, R.**, “Identification and estimation of dynamic models with a time series of repeated cross sections,” *Econometrica*, 1993, 59, 99–123.
- Mokdad, Ali H., James S. Marks, Donna F. Stroup, and Julie L. Gerberding**, “Actual Causes of Death in the United States, 2000,” *Journal of the American Medical Association*, 2004, 291, 1238–1245.
- Monsivais, P. and A. Jacobsenski**, “The Rising Cost of Low-Energy-Density Foods,” *Journal of American Dietetic Association*, 2007, 107 (12).
- Nickel, S.**, “Biases in dynamic models with fixed effects,” *Econometrica*, 1981, 49, 1417–1426.
- Nonnemaker, James, Eric Finkelstein, Mark Engelen, Thomas Hoerger, and Matthew Farrelly**, “Have Efforts to Reduce Smoking Really Contributed to the Obesity Epidemic?,” *Economic Inquiry*, April 2009, 47 (2), 366–376.
- Olshansky, S. Jay, Douglas J. Passaro, Ronald C. Hershov, Jennifer Layden, Bruce A. Carnes, Jacob Brody, Leonard Hayflick, Robert N. Butler, David B. Allison, and David S. Ludwig**, “A Potential Decline in Life Expectancy in the United States in the 21st Century,” *New England Journal of Medicine*, March 2005, 352, 1138–1145.
- Philipson, Tomas and Richard Posner**, “Is the Obesity Epidemic a Public Health Problem? A Decade of Research on the Economics of Obesity,” NBER Working Papers 14010, National Bureau of Economic Research, Inc May 2008.
- Pinkowish, M.**, “Hand in glove: smoking cessation and weight gain,” *Patient Care*, 1999, 33, 134.
- Rashad, Inas**, “Structural estimation of caloric intake, exercise, smoking, and obesity,” *The Quarterly Review of Economics and Finance*, May 2006, 46 (2), 268–283.
- Rhum, Chris**, “Current and future prevalence of obesity and severe obesity in the United States,” NBER Working Papers 13181, National Bureau of Economic Research, Inc 2007.

- Seiders, Kathleen and Ross D. Petty**, “Obesity and the Role of Food Marketing: A Policy Analysis of Issues and Remedies,” *Journal of Public Policy & Marketing*, 2004, 23 (2), 152–169.
- Serdula, M., D. Ivery, R. Coates, D. Freedman, D. Williamson, and T. Byers**, “Do Obese Children Become Obese Adults,” *Preventive Medicine*, 1993, 22, 167–177.
- Smith, Trenton G., Christiana Stoddard, and Michael G. Barnes**, “Why the Poor Get Fat: Weight Gain and Economic Insecurity,” *SSRN eLibrary*, 2007.
- Stevens, Marybeth**, “Present Dangers: Presenteeism is the Next Area of Focus as Companies Seek to Maximize Their Investment in Human Capital by Improving Productivity and Promoting Employee Health and Wellness - Disability,” *Risk & Insurance*, March 2004.
- Stock, James H, Jonathan H Wright, and Motohiro Yogo**, “A Survey of Weak Instruments and Weak Identification in Generalized Method of Moments,” *Journal of Business & Economic Statistics*, October 2002, 20 (4), 518–29.
- Strnad, Jeff**, “Conceptualizing the Fat Tax: The Role of Food Taxes in Developed Economies,” December 2005. John Olin Program in Law and Economics Working Paper 286.
- Sturm, R.**, “The effects of obesity, smoking and drinking on medical problems and costs,” *Health Affairs*, 2003, 31, 245–253.
- Verbeek, Mario and T. Nijman**, “Can Cohort Data be Treated as Genuine Panel Data,” *Empirical Economics*, 1992, 17 (1), 9–23.
- Wellever, A., A. Reichard, and M. Velasco**, “Obesity and Public Policy: Legislation Passed by States, 1999 to 2003,” Technical Report, Kansas Health Institute 2004.
- Whitaker, R., J. Wright, M. Pepe, K. Seidel, and W. Dietz**, “Predicting Obesity in Young Adulthood from Childhood and Parental Obesity,” *The New England Journal Of Medicine*, 1997, 337 (13).
- Wrotniak, B., L. Epstein, R. Paluch, and J. Roemmich**, “Parent Weight Change as a Predictor of Child Weight Change in Family-Based Behavioral Obesity Treatment,” *Archives of Pediatrics & Adolescent Medicine*, April 2004, 158, 9–23.