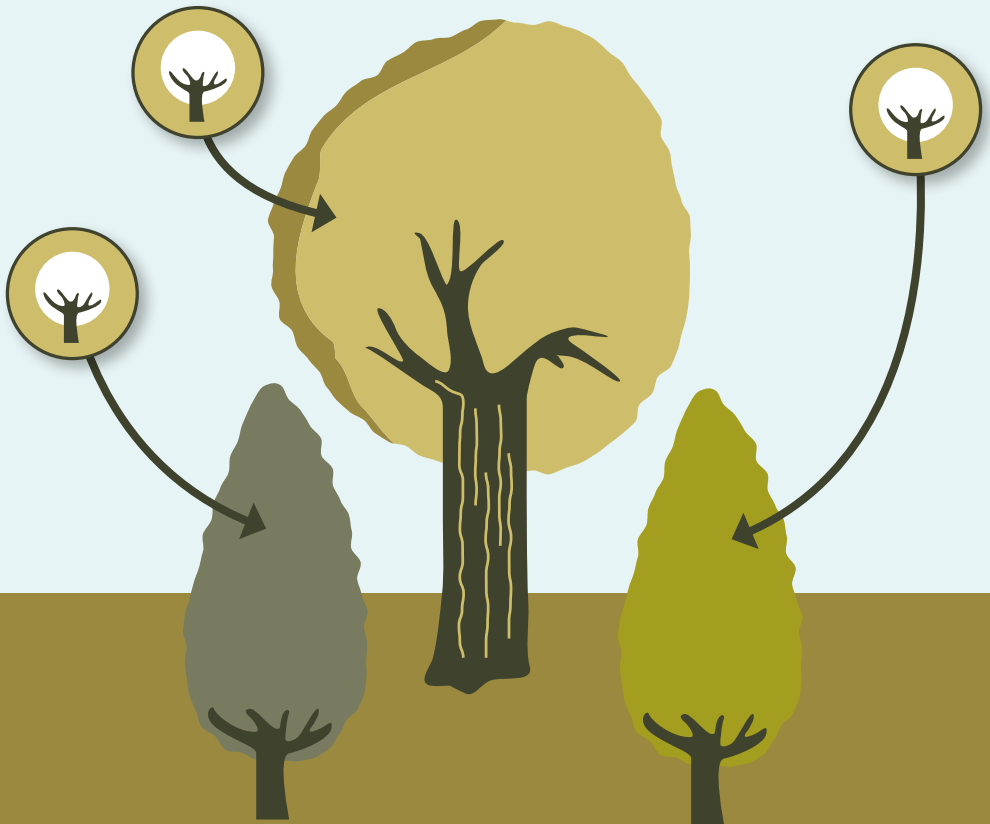




UNIVERSITY  
*of York*

# CAMPUS TREE TRAIL

## NON-NATIVE TREE TRAIL



# TREE TRAIL



Welcome to the University of York tree trail. Although there are more than 50 trees featured on this trail, you might not want to see them all in one go. With this in mind, the characteristics of each tree are listed, together with the best season in which to see them. This information may help you to choose which trees you want to see depending on what you are interested in and what time of year it is. However you choose to use it, we hope you enjoy the trail and the campus in general.

## NON-NATIVE TRAIL

Mostly non-native trees of general interest



**TREE 1:** **Persian Ironwood**  
(*Parrotia persica*)

**LOCATION**  
Heslington Hall courtyard

**CHARACTERISTICS**  
Autumn foliage

**BEST SEASON**  
Autumn

**TREE 2:** **Paperbark Birch**  
(*Betula papyrifera*)

**LOCATION**  
Derwent

**CHARACTERISTICS**  
Attractive bark

**BEST SEASON**  
Year round

**TREE 3:** **Antarctic Beech**  
(*Nothofagus procera*)

**LOCATION**  
Derwent

**CHARACTERISTICS**  
Foliage/fruits

**BEST SEASON**  
Summer/autumn

**TREE 4:** **Judas tree**  
(*Cercis siliquastrum*)

**LOCATION**  
Derwent

**CHARACTERISTICS**  
Flowers (May)

**BEST SEASON**  
Spring



**TREE 5:** **Cultivar of Judas Tree**  
(*Cercis Forest Pansy*)

**LOCATION**  
Derwent

**CHARACTERISTICS**  
Leaf colour

**BEST SEASON**  
Spring/summer

**TREE 6:** **Tree of Heaven**  
(*Alianthus altissima*)

**LOCATION**  
Derwent

**CHARACTERISTICS**  
Leaf shape/length

**BEST SEASON**  
Spring/summer

**TREE 7:** **Monterey Pine**  
(*Pinus radiata*)

**LOCATION**  
Derwent

**CHARACTERISTICS**  
Conifer/evergreen

**BEST SEASON**  
Year round

**TREE 8:** **Korean Birch**  
(*Betula costata*)

**LOCATION**  
Derwent

**CHARACTERISTICS**  
Attractive bark

**BEST SEASON**  
Year round

TREE 9: **Pride of India**  
(*Koelreuteria paniculata*)

LOCATION  
Derwent

CHARACTERISTICS  
Flowers (July)

BEST SEASON  
Summer

---



TREE 12: **Swamp Cypress**  
(*Taxodium distichum*)

LOCATION  
Spring Lane

CHARACTERISTICS  
Deciduous conifer/autumn colour

BEST SEASON  
Autumn

---

TREE 10: **Honey Locust**  
(*Gleditsia tricanthos*)

LOCATION  
Derwent

CHARACTERISTICS  
Foliage

BEST SEASON  
Summer/autumn

---

TREE 11: **Caucasian Wingnut**  
(*Pterocarya fraxinifolia*)

LOCATION  
Spring Lane Building

CHARACTERISTICS  
Flowers/seeds (June/July)

BEST SEASON  
Summer

---

TREE 13: **Japanese Maple**  
(*Acer palmatum Osakazuki*)

LOCATION  
Spring Lane

CHARACTERISTICS  
Autumn foliage

BEST SEASON  
Autumn

---

TREE 14: **Form of Whitebeam**  
(*Sorbus mitchellii*)

LOCATION  
Health Centre

CHARACTERISTICS  
Foliage/fruits

BEST SEASON  
Summer/autumn

---

TREE 15: **Pendulous Lawson's Cypress**  
(*Chamaecyparis lawsoniana Pendula*)

LOCATION  
Campus Nursery

CHARACTERISTICS  
Conifer/evergreen/pendulous branches

BEST SEASON  
Year round

---

TREE 16: **Black Walnut**  
(*Juglans nigra*)

LOCATION  
Campus south car park

CHARACTERISTICS  
Autumn fruits/scented foliage

BEST SEASON  
Summer/autumn

---

TREE 17: **Medlar**  
(*Mesipilus germanica*)

LOCATION  
Dalham Farm

CHARACTERISTICS  
Flowers/fruit (May/Oct)

BEST SEASON  
Summer/autumn

---

TREE 18: **Cockspur Thorn**  
(*Crataegus x prunifolia*)

LOCATION  
Running track

CHARACTERISTICS  
Fruit/autumn colour

BEST SEASON  
Autumn

---

TREE 19: **Italian Pencil Cypress**  
(*Cupressus sempervirens*)

LOCATION  
James College

CHARACTERISTICS  
Conifer/evergreen/upright habit

BEST SEASON  
Year round

---

**TREE 20:** **Incense Cedar**  
(*Calocedrus decurrens*)

**LOCATION**  
James College

**CHARACTERISTICS**  
Conifer/evergreen/upright habit

**BEST SEASON**  
Year round

**TREE 21:** **River Birch**  
(*Betula nigra*)

**LOCATION**  
James College

**CHARACTERISTICS**  
Attractive bark

**BEST SEASON**  
Year round

**TREE 22:** **Golden Dawn Redwood**  
(*Metasequoia glyptostroboides* Goldrush)

**LOCATION**  
Physics/Electronics

**CHARACTERISTICS**  
Deciduous conifer/golden foliage

**BEST SEASON**  
Spring/summer



**TREE 23:** **Weeping Silver Pear**  
(*Pyrus salicifolius* Pendula)

**LOCATION**  
Central Hall bridge

**CHARACTERISTICS**  
Silver foliage

**BEST SEASON**  
Summer

**TREE 24:** **Giant Fir**  
(*Abies grandis*)

**LOCATION**  
Central Hall mound

**CHARACTERISTICS**  
Conifer/evergreen/scented foliage

**BEST SEASON**  
Year round



**TREE 25:** **Weeping Elm**  
(*Ulmus camperdownii*)

**LOCATION**  
Central Hall lakeside

**CHARACTERISTICS**  
Weeping habit

**BEST SEASON**  
Year round

**TREE 26:** **Species Dawn Redwood**  
(*Metasequoia glyptostroboides*)

**LOCATION**  
Central Hall lakeside

**CHARACTERISTICS**  
Deciduous conifer

**BEST SEASON**  
Spring/summer

**TREE 27:** **Wych Elm**  
(*Ulmus glabra*)

**LOCATION**  
Spring Lane

**CHARACTERISTICS**  
Rare tree because it has survived DED (Dutch Elm Disease)

**BEST SEASON**  
Spring/summer

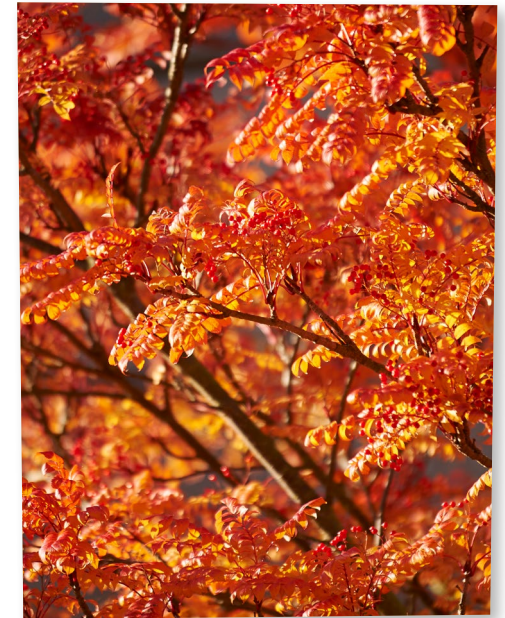


**TREE 29:** **Katsura/Candyfloss tree**  
(*Cercidiphyllum japonicum*)

**LOCATION**  
Berwick Saul building

**CHARACTERISTICS**  
Leaf fragrance of burnt sugar

**BEST SEASON**  
Autumn



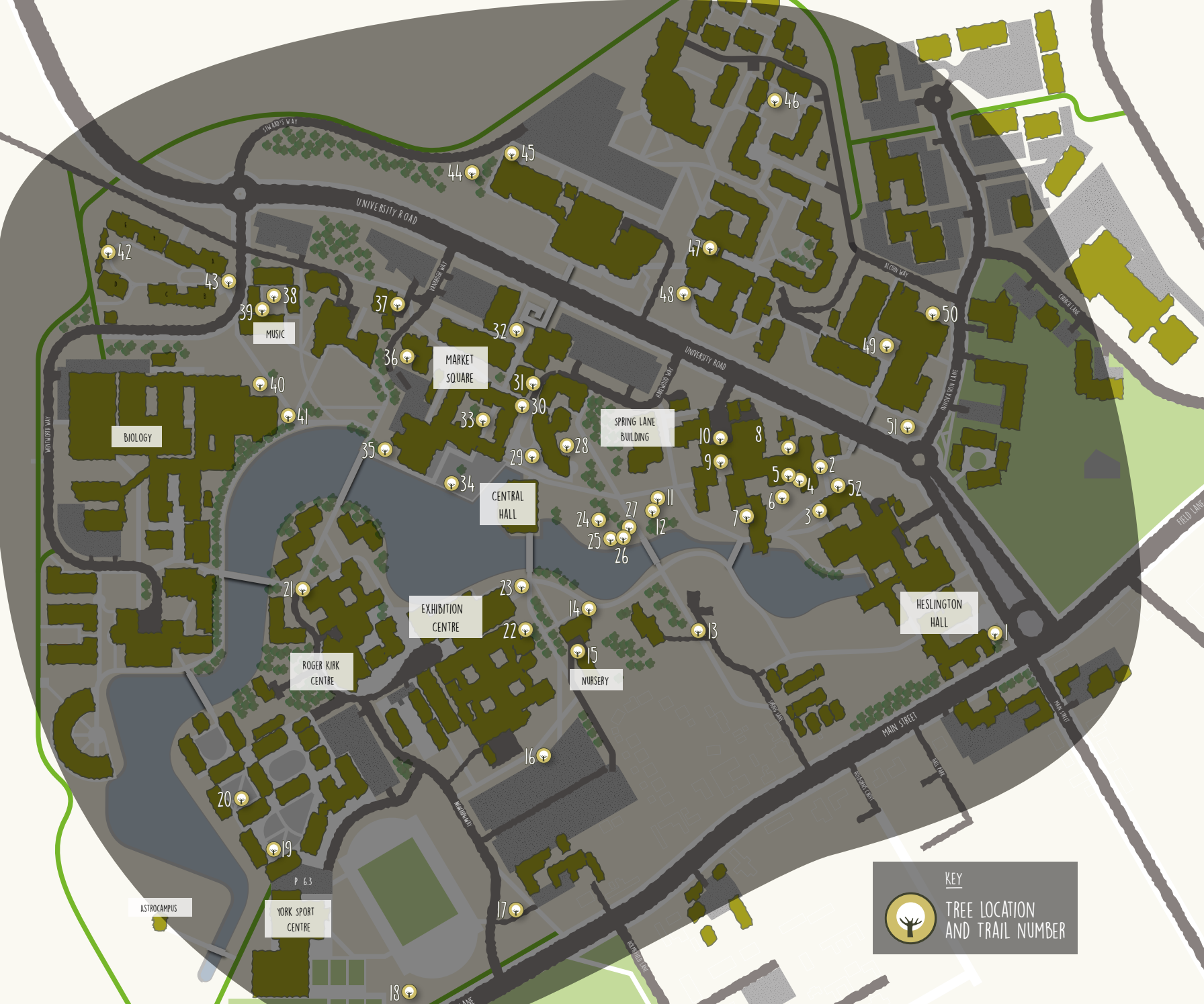
**TREE 28:** **Tulip Tree**  
(*Liriodendron tulipifera*)

**LOCATION**  
Berwick Saul Building

**CHARACTERISTICS**  
Leaf shape and flowers (June/July)

**BEST SEASON**  
Summer





KEY



TREE LOCATION AND TRAIL NUMBER

**TREE 30: Snake Bark Maple**  
(*Acer davidii*)

**LOCATION**  
Vanbrugh

**CHARACTERISTICS**  
Attractive bark

**BEST SEASON**  
Year round



**TREE 31: Handkerchief Tree**  
(*Davidia involucrata*)

**LOCATION**  
Student Services

**CHARACTERISTICS**  
Flowers (May)

**BEST SEASON**  
Spring

**TREE 32: Foxglove Tree**  
(*Paulownia tormentosa*)

**LOCATION**  
Market Square

**CHARACTERISTICS**  
Flowers (May)

**BEST SEASON**  
Spring

**TREE 33: Atlas Cedar**  
(*Cedrus atlantica Glauca*)

**LOCATION**  
Vanbrugh

**CHARACTERISTICS**  
Conifer/evergreen/cones

**BEST SEASON**  
Year round

**TREE 34: Spaeths Alder**  
(*Alnus spatheii*)

**LOCATION**  
Greg's Place

**CHARACTERISTICS**  
Long catkins

**BEST SEASON**  
Spring

**TREE 35: Flowering Cherry Species**  
(*Prunus shirotae (Syn Mount Fuji)*)

**LOCATION**  
Vanbrugh

**CHARACTERISTICS**  
Flowers/weeping habit (April)

**BEST SEASON**  
Spring

**TREE 36: Deodar Cedar**  
(*Cedrus deodara*)

**LOCATION**  
Vanbrugh (Grimston House)

**CHARACTERISTICS**  
Conifer/evergreen/cones

**BEST SEASON**  
Year round



**TREE 37: Purple leaved India Bean Tree**  
(*Catalpa bigonoides*)

**LOCATION**  
The Warren

**CHARACTERISTICS**  
Foliage and flowers (August)

**BEST SEASON**  
Summer



**TREE 38: Black Mulberry**  
(*Morus nigra*)

**LOCATION**  
Sally Baldwin Building/Music

**CHARACTERISTICS**  
Foliage and fruit

**BEST SEASON**  
Summer

**TREE 39: Sweet Gum**  
(*Liquidamber styraciflua*)

**LOCATION**  
Sally Baldwin Building/Music

**CHARACTERISTICS**  
Autumn foliage

**BEST SEASON**  
Autumn

**TREE 40: Giant Redwood**  
(*Sequoiadendron giganteum*)

**LOCATION**  
Biology

**CHARACTERISTICS**  
Conifer/evergreen/stature

**BEST SEASON**  
Year round

**TREE 41: Poplar Species**  
(*Populus vialocens*)

**LOCATION**  
Biology

**CHARACTERISTICS**  
Foliage

**BEST SEASON**  
Summer

**TREE 42: Common Walnut**  
(*Juglans regia*)

**LOCATION**  
Scott/Barron Court

**CHARACTERISTICS**  
Aromatic foliage/fruit

**BEST SEASON**  
Summer



**TREE 43: Amur Maple**  
(*Acer ginnala*)

**LOCATION**  
Scott/Barron Court

**CHARACTERISTICS**  
Fragrant flowers (May)/Autumn foliage

**BEST SEASON**  
Autumn

**TREE 44: Douglas Fir**  
(*Pseudotsuga menziesii*)

**LOCATION**  
Harry Fairhurst Building

**CHARACTERISTICS**  
Conifer/evergreen/stature

**BEST SEASON**  
Year round



TREE 45: **Holm or Holly Oak**  
(*Quercus ilex*)

**LOCATION**  
Harry Fairhurst Building

**CHARACTERISTICS**  
Evergreen

**BEST SEASON**  
Year round

TREE 46: **Bhutan Pine**  
(*Pinus wallichiana*)

**LOCATION**  
Alcuin College

**CHARACTERISTICS**  
Needles/cones

**BEST SEASON**  
Year round

TREE 47: **Fastigiata Beech**  
(*Fagus sylvatica Dawyk*)

**LOCATION**  
Alcuin Collge/Seebohm Rowntree Building

**CHARACTERISTICS**  
Growth habit (upright)

**BEST SEASON**  
Year round

TREE 48: **Paperbark Maple**  
(*Acer griseum*)

**LOCATION**  
Seebohm Rowntree Building

**CHARACTERISTICS**  
Attractive bark

**BEST SEASON**  
Year round

TREE 49: **Service Tree**  
(*Sorbus torminalis*)

**LOCATION**  
Chemistry quad

**CHARACTERISTICS**  
Fruits

**BEST SEASON**  
Autumn

TREE 50: **Tibetan Cherry**  
(*Prunus serrula*)

**LOCATION**  
Chemistry

**CHARACTERISTICS**  
Attractive bark

**BEST SEASON**  
Year round

TREE 51: **Weeping Beech**  
(*Fagus sylvatica Pendula*)

**LOCATION**  
Chemistry

**CHARACTERISTICS**  
Growth habit (weeping)

**BEST SEASON**  
Year round

TREE 52: **Hop Hornbeam**  
(*Ostrya carpinifolia*)

**LOCATION**  
Derwent

**CHARACTERISTICS**  
Flowers (April)

**BEST SEASON**  
Spring







FOR MORE INFORMATION AND DIFFERENT WALKING ROUTES, VISIT

[www.york.ac.uk/admin/estates/operations/grounds](http://www.york.ac.uk/admin/estates/operations/grounds)



The University of York is committed to environmentally friendly sustainable printing. Our Tree Trail booklets include the use of Forest Stewardship Council (FSC®) certified paper.