

# PC-MIS Leads the Way in Data Collection and Usability

The Department of Health's national review of the progress made by first-wave Improving Access to Psychological Therapies (IAPT) services has affirmed PC-MIS as the number one choice for IAPT data collection. The Department of Health (DH)-commissioned IAPT report shows that PC-MIS is setting the standard for data collection, usability, and data quality.

## Data Collection

The DH report proves PC-MIS is at the forefront of IAPT data collection, a central feature of the system. All 20 PC-MIS sites out of the 32 first-wave sites submitted excellent data availability.

PC-MIS sites reported a **99.59%** average for usable initial appointment data availability in the age group category compared with a trial average of 91.7%, with

**99.59%**

The average percentage of usable data availability of IAPT sites using PC-MIS.

many PC-MIS services returning 100% data availability. In the gender usability group, sites using PC-MIS reported a **96.95%** average in data availability. These results facilitated more accurate data analysis for the IAPT programme as a whole and better evaluation of equality performance.

## Outcomes

Clinical outcomes are central to the design and tools available in PC-MIS.

PC-MIS facilitated the **highest recovery rate** of all IAPT services for cases of depression PHQ9 scores 10+ with the top service achieving an impressive **63%** recovery rate. In fact, all of the **top 3** IAPT services in this category used PC-MIS, with recovery rates of 58% and 57.4% respectively. The top PC-MIS recovery rate for the Anxiety GAD7 8+ was set at an equally impressive 60.3%. These results were also reflected in the MTR2 markers which combine the three key PHQ9, GAD7 and IAPT Phobia clinical assessments. Again the

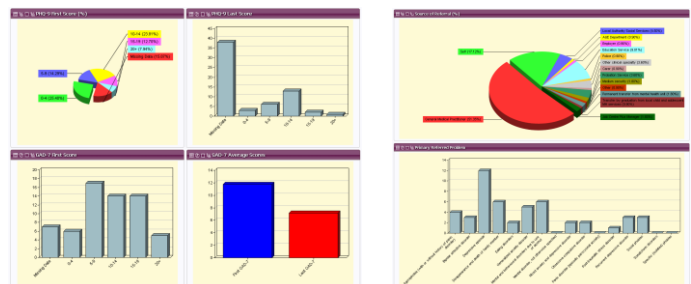
**63%**

Recovery rates for PHQ9 scores of 10+ for services using PC-MIS.

highest combined recovery rate across all three outcomes was recorded by a service using PC-MIS at 51% and the top three IAPT services in this category all used PC-MIS. Case management supervision and automated clinical alerts, which are unique features of PC-MIS, are proven through evidence based research to improve patient outcomes.

## Data Usability

PC-MIS consistently delivers usable data to supervisors and service reports. In usable referral source codes, PC-MIS sites averaged an excellent 97.95% with nine sites recording 100% usability in this area.



PC-MIS outperformed the competition in usable diagnoses, with sites delivering 66.73% usability, over twelve points above the combined site average. In employment/benefit status progress, PC-MIS sites delivered over three-quarters of records as usable. With high results in usability, PC-MIS provides a platform for better analysis of key IAPT outcomes such as employment and diagnosis.

## Data Quality

Data quality and the prevention of missing data is a vital aim of the PC-MIS system, and was an area in which PC-MIS sites performed particularly well. In treatment types which were not recorded, PC-MIS sites averaged a mere 1.81% - half a point below the combined site average.

**98.19%**

The percentage of treatment types which were recorded by IAPT sites using PC-MIS.

The PC-MIS site average for missing economic activity data was 1.6% median, which represents an exceptionally low loss of key IAPT data. PC-MIS site performance in this area demonstrates that the system is designed to prevent and to act against missing or leaked data.

*'Improving Access to Psychological Therapies: A review of the progress made by sites in the first roll-out year'* is available at <http://www.wmrhc.org.uk/silo/files/iapt-year-1-sites-data-review-final-report.pdf>

Find out more about PC-MIS at <http://www.pc-mis.co.uk>