

Shutting down

Log off (don't shut down) the PC, and remove any USB memory sticks/CDs/DVDs/VHS tapes that have been used. Use the display off [2] button to turn the projector off, and the monitor power [5] button to turn the monitor off. The PC will be turned off automatically at the end of the teaching day, and the projector will be turned off if left on. Please do not turn off the trolley at the wall, as we have tests that run overnight.

Need more help?

If you need urgent assistance, please call the on call technician on x3036 from the phone in the room. This will be transferred to a mobile phone after 30 seconds.

If you have equipment booking queries, please consult the attributes list on the web, or call x3033 .

If you have technical queries, please call the workshop on x3035.

Please report all faults with this equipment as soon as possible, to enable us to repair them quickly.

Common Problems

No sound

Turn the lectern power on using the switch on top

Can't get logged on

Use your email address as username (e.g. ozw1@york.ac.uk),
and your computing service password

No display on monitor

Turn monitor on using button at base



Seebom Rowntree Tech Trolley Operating Instructions

Equipment available:-

- Networked Windows XP PC, with Office 2003 & USB port
- Data Projector & Speakers
- VHS & CD/DVD player
- Laptop connections (power, sound and picture)
- Monitor for lecturer

AV Workshop - 01904 43 3035

On call technician - 01904 43 3036 (diverts to mobile phone)

Data Projector

The data projector is controlled from a button panel on the teaching wall.

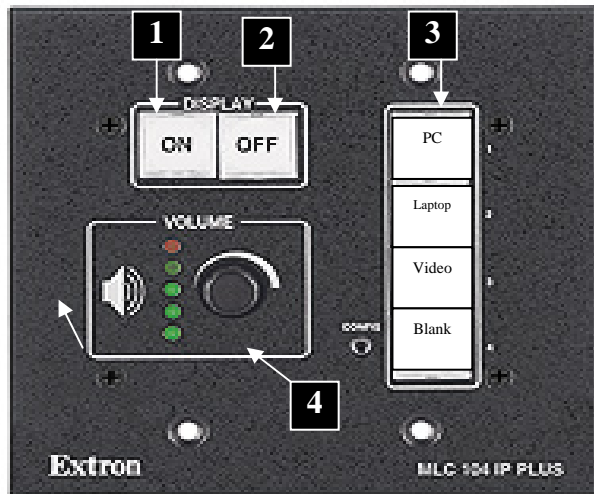


Figure 1 - Projector Control Panel



Figure 2-
Typical Projection
Screen Switch

Turn the projector on using the display **on** [1] button in the top left hand corner. The projector will take up to a minute to warm up, during which time the on button will flash.

The **projection screen** is lowered & raised using an up/down switch located on the lecture room wall.

Input Selection

Choose **PC**, **Laptop** or **Video** on the input select [3] buttons. The currently selected source will illuminate.

Monitor

If no picture is displayed on the monitor on the lectern, press the **power** button at the bottom in the centre of the monitor [5].



Campus PC

Use the power button [6] to turn on the PC. Log in using your computing service username & password. Check that "Log on to" is set to "CSRVDYORK". A USB port is located on the front panel.



Figure 3 - Campus PC

Video/CD/DVD Player

Use the VIDEO button [3] to select the video player.



Figure 4 - VHS/DVD Player

Sound

Speakers are fitted in every room, and the program volume can be adjusted with the control [4]. The volume may also be adjusted using the controls on the amplifier, found in the trolley.



Laptops

Connection leads are provided in these rooms. Power is available on top of the trolley and picture and audio are on long leads from the wall. These should be connected to the respective ports on your laptop as required. You might need to enable external display on your laptop, using eg: "Fn" and "F5", "Fn" and "F8", or a similar key combination depending on the manufacturer.

